



YONGGUI

证券代码:300351
Stock Code: 300351

2022版 通信 & 能源互联方案

通信产品手册

Communication Product Manual

永 贵 连 接
Connectors of Yonggui

连 接 专 家
Connecting to specialists



浙江永贵电器股份有限公司

Zhejiang Yonggui Electric Equipment Co.,Ltd

地址: 浙江省天台县白鹤镇东园路5号(西工业园)
Add: No.5 Dongyuan Road, Baihe Town, Tiantai County, Zhejiang
邮编/P.C: 317201
电话/Tel: +86 576-83938111
传真/Fax: +86 576-83938100
邮箱/E-mail: yongguisqb@yonggui.com
网址/Web: http://www.yonggui.com

四川永贵科技有限公司

Sichuan Yonggui Science and Technology Co.,Ltd

地址: 四川省绵阳市涪城区金家林上街68号
Add: No.68. Jinjialin upper street, Fucheng District,
Mianyang, Sichuan
邮编/P.C: 621000
销售电话/Sales tel: 0816-2538443
传真/Fax: 0816-2536042
技术咨询/Service of technical: 0816-2539147 2534847
网址/Web: http://www.yonggui-sc.com



扫码关注 我们

浙江永贵电器股份有限公司
Zhejiang Yonggui Electric Equipment Co.,Ltd

四川永贵科技有限公司
Sichuan Yonggui Science and Technology Co.,Ltd



企业文化

人本、高效、勤俭、创新

企业宗旨

时刻跟随市场发展
始终关注顾客需求

经营理念

诚信、和谐、敬业、创造客户价值

企业愿景

致力于成为有影响力的连接器企业

企业简介 >>>



328 +项
自主研发国家专利授权

50 +种
公司检测试验设备

180 +人
专业技术研发人员

6 个
制造加工事业部

四川永贵科技有限公司创办于2008年，注册资金人民币一亿元，隶属于浙江永贵电器股份有限公司（始创于1973年，为铁道部定点电连接器生产企业，并于2012年9月20日在深交所成功上市，股票名称：永贵电器；股票代码：300351）。

公司主要从事各类电连接器、连接器组件及机电产品的研发、制造、销售和技术支持等业务，同时拥有所经营产品的自主进出口权。公司于2010年通过了国家高新技术企业认定，“高密度光电混合传输电连接器”列入国家火炬计划项目，多个项目获得国家创新基金支持，取得国家专利授权328项，发明专利48项。到目前为止公司研制出了几千种规格产品，广泛应用于轨道交通、石油勘探、通讯、工业设备、风力发电、电动汽车及特种防务等领域。

同时，公司产品直接或间接出口到世界十多个国家和地区，深得客户的好评。

公司坐落于中国科技城四川省绵阳市科创园区，距绵广高速绵阳入口约2公里。厂区建筑面积约8.1万平方米，各类配套设施完善。公司拥有一支具有丰富的电连接器专业知识的专家队伍和管理团队，能为客户提供连接与互连技术的系统解决方案。同时，公司技术中心被评为市级优秀技术中心。公司先后通过了ISO9000质量管理体系认证、ISO/TS16949:2009汽车零部件生产体系认证、ISO/TS22163轨道交通业质量管理体系认证、GJB 9001C质量管理体系认证、ISO14001环境管理体系认证、GB/T28001职业健康安全管理体系认证、EN15085-2轨道交通领域焊接体系认证、ISO3834国际焊接体系认证。



01 信号连接器

YG295连接器	1
YG559-B连接器	2
YG559-C连接器	3
YG559-D连接器	4
YG559-E连接器	5
YG583连接器	6
YG909连接器	7
YG927连接器	8
141019连接器	9
D- SUB 9PIN 连接器插座	11
D- SUB 15PIN 连接器插座	12

02 模块电源连接器

YG619连接器	13
YG689连接器	14
YG690连接器	15
141027B连接器	16
141030A1连接器	17
141030C连接器	18
141054连接器	19
141054B连接器	20
141095连接器	21
141100连接器	22
141025连接器	23
141057A连接器	24
141057B连接器	25
141067-12芯连接器	26
141067-13芯连接器	27
141067-14芯连接器	28
141067-37芯连接器	29
141067-52芯连接器	30
YGC1144连接器	31
YGC565-03连接器	32
YGC565-0516连接器	33
YGC565-0844连接器	34
YGC565-3214连接器	35
YGC565-032403连接器	36

YGC565-032405连接器	37
YGC565-041602连接器	38
141082连接器	39
141088连接器	40

03 背板边缘模块金手指连接器

YGC562B连接器	41
YGC562D直式连接器	42
YGC562D连接器(直式)	43
YGC562D连接器(弯式)	44
YGC562E连接器	45
YGC562G连接器	46
141050连接器	47
141064A连接器	48
141064C连接器	49
141064D连接器	50
141064E连接器	51
141086连接器	52
YG196-438A连接器	53

04 端子台连接器

YG196-370-4PIN连接器	54
141056连接器	55
141063连接器	56
141084连接器	57
141093连接器	58
141106连接器	59

05 线束系列

通信及锂电池机柜线束	60
UPS不间断电源线束	60
基站交直流电源线束	61
光纤室外拉远线束	61

YG295电连接器

YG295 CONNECTOR INTRODUCTION

应用范围 Application

- 各类电气设备、通信设备系统间的信号传输。
- Signal transmission between systems of electric equipment and communication equipment.

产品描述 Description

- 高防腐金属外壳 Highly corrosion resistant metal shell
- 焊接结构 Welded structure
- 锁紧方式 Lock mode: 螺纹连接 Threaded connection

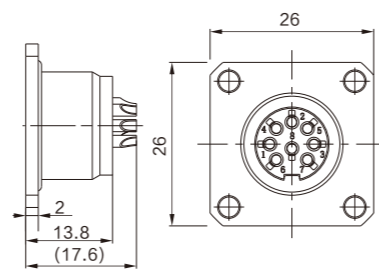
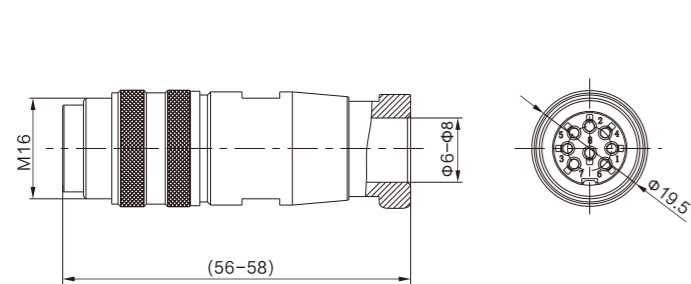
性能参数 Specification

- 芯数 Pins: 8
- 额定电流 Current Rating: 5A
- 额定电压 Voltage Rating: 250V AC
- 接触电阻 Contact Resistance: $\leq 5m\Omega$
- 绝缘电阻 Insulation Resistance: $\geq 5000M\Omega$
- 耐电压 Dielectric Withstanding Voltage: 1200V AC
- 工作温度 Temperature Range: $-40^{\circ}C \sim +85^{\circ}C$
- 防护等级 IP Code: IP67
- 机械寿命 Mechanical Life: 500次

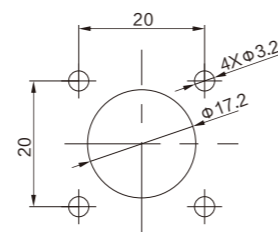


YG295 插头

YG295 插座



YG295 面板开孔尺寸



芯数	8	12
绝缘体正面图		

YG559-B电连接器

YG559-B CONNECTOR INTRODUCTION

应用范围 Application

- 户外LED显示设备、监控设备、通讯设备的信号传输。
- Signal transmission of outdoor LED display equipment, monitoring equipment and communication equipment.

产品描述 Description

- 锁紧方式 Locking Mode: 快速卡口连接 Quick bayonet connection
- 端接方式 Termination Methods: 焊接 PCB welding
- 线缆规格 Cable Specification: $\leq 2mm^2/14AWG$

性能参数 Specification

- 芯数 Pins: 2/3/4/6/8/12
- 额定电压及额定电流 Voltage Rating and Current Rating:

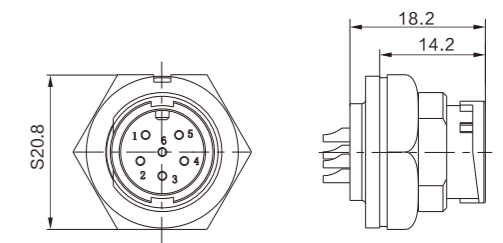
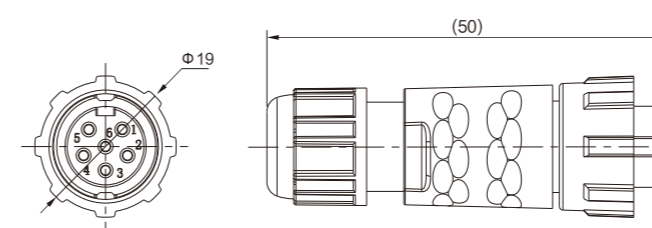
连接器芯数 Pins	2	3	4	6	8	12
额定电流(A) Current Rating	10A	10A	10A	5A	5A	2A
额定电压(V) Voltage Rating	300V	300V	250V	250V	125V	30V

- 绝缘电阻 Insulation Resistance: $\geq 1000M\Omega$
- 耐电压 Dielectric Withstanding Voltage: 1000V AC
- 工作温度 Temperature Range: $-40^{\circ}C \sim +70^{\circ}C$
- 防护等级 IP Code: IP67
- 机械寿命 Mechanical Life: 500次

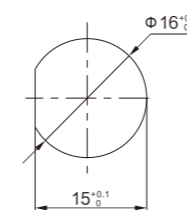


YGC559-B 插头

YGC559-B 插座



YGC559-B 面板开孔尺寸



芯数	2	3	4	6	8	12
插孔绝缘体正面图						

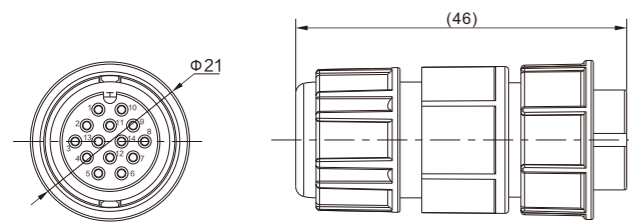
YG559-C电连接器

YG559-C CONNECTOR INTRODUCTION

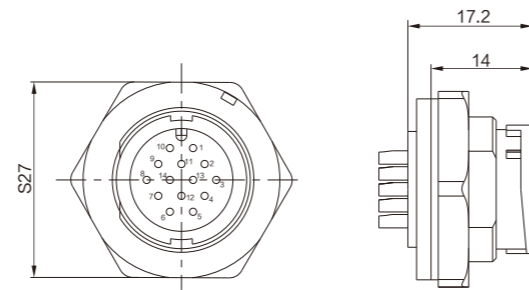


应用范围 Application
<ul style="list-style-type: none"> ● 户外LED显示设备、监控设备、通讯设备的信号传输。 ● Signal transmission of outdoor LED display equipment, monitoring equipment and communication equipment.
产品描述 Description
<ul style="list-style-type: none"> ● 锁紧方式 Locking Mode: 快速卡口连接 Quick bayonet connection ● 端接方式 Termination Methods: 焊接 PCB welding ● 线缆规格 Cable Specification: $\leq 0.79\text{mm}^2/18\text{AWG}$
性能参数 Specification
<ul style="list-style-type: none"> ● 芯数 Pins: 14 ● 额定电流 Current Rating: 5A ● 额定电压 Voltage Rating: 500V ● 绝缘电阻 Insulation Resistance: $\geq 1000\text{M}\Omega$ ● 耐电压 Dielectric Withstanding Voltage: 1500V AC ● 工作温度 Temperature Range: $-40^\circ\text{C} \sim +70^\circ\text{C}$ ● 防护等级 IP Code: IP67 ● 机械寿命 Mechanical Life: 500次

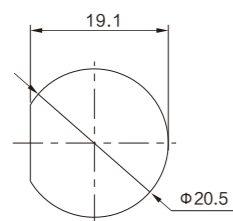
YG559-C 插头



YG559-C 插座



YG559-C 面板开孔尺寸



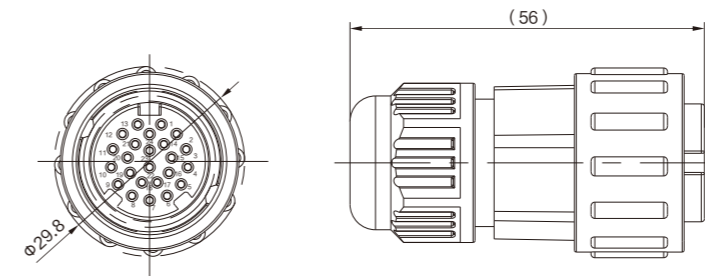
YG559-D电连接器

YG559-D CONNECTOR INTRODUCTION

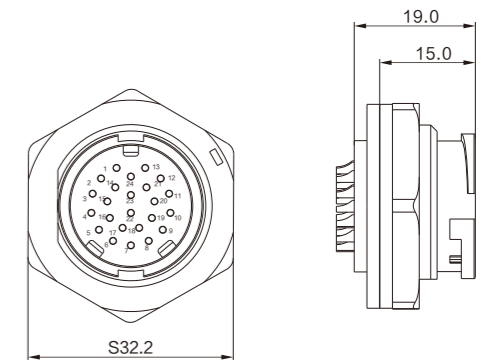


应用范围 Application
<ul style="list-style-type: none"> ● 户外LED显示设备、监控设备、通讯设备的信号传输。 ● Signal transmission of outdoor LED display equipment, monitoring equipment and communication equipment.
产品描述 Description
<ul style="list-style-type: none"> ● 锁紧方式 Locking Mode: 快速卡口连接 Quick bayonet connection ● 端接方式 Termination Methods: 焊接 PCB welding ● 线缆规格 Cable Specification: $\leq 0.79\text{mm}^2/18\text{AWG}$
性能参数 Specification
<ul style="list-style-type: none"> ● 芯数 Pins: 24 ● 额定电流 Current Rating: 5A ● 额定电压 Voltage Rating: 500V ● 绝缘电阻 Insulation Resistance: $\geq 1000\text{M}\Omega$ ● 耐电压 Dielectric Withstanding Voltage: 1500V AC ● 工作温度 Temperature Range: $-40^\circ\text{C} \sim +70^\circ\text{C}$ ● 防护等级 IP Code: IP67 ● 机械寿命 Mechanical Life: 500次

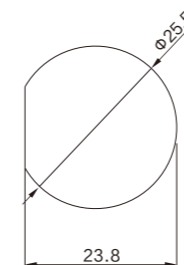
YG559-D 插头



YG559-D 插座



YG559-D 面板开孔尺寸



YG559-E电连接器

YG559-E CONNECTOR INTRODUCTION

应用范围 Application

- 户外LED显示设备、监控设备、通讯设备的信号传输。
- Signal transmission of outdoor LED display equipment, monitoring equipment and communication equipment.

产品描述 Description

- 锁紧方式 Locking Mode: 快速卡口连接 Quick bayonet connection
- 端接方式 Termination Methods: 压接/焊接 Crimping/Welding
- 线缆规格 Cable Specification: 0.3mm² (信号针 signal pin)、4mm² (电源针 power pin)

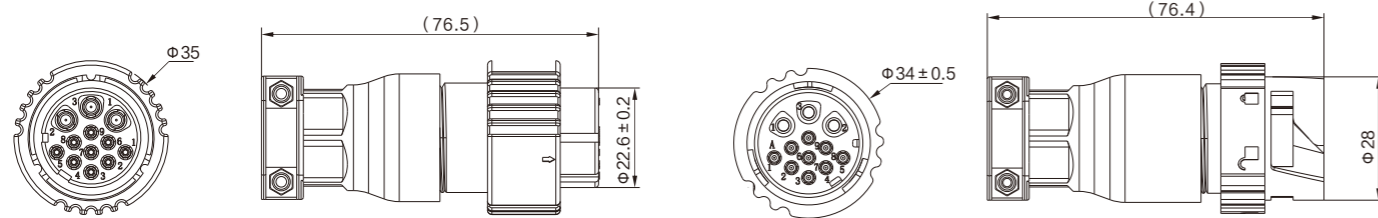
性能参数 Specification

- 芯数 Pins: 3+9
- 额定电流 Current Rating: 5A/20A
- 额定电压 Voltage Rating: 300V AC
- 绝缘电阻 Insulation Resistance: $\geq 1000M\Omega$
- 耐电压 Dielectric Withstanding Voltage: 1500V AC
- 工作温度 Temperature Range: -40℃ ~ +70℃
- 防护等级 IP Code: IP67
- 机械寿命 Mechanical Life: 500次



YG559-E 插头

YG559-E 插座



YG583电连接器

YG583 CONNECTOR INTRODUCTION

应用范围 Application

- LED显示设备、闭路监控设备、通讯设备等RJ45通讯传输。
- RJ45 communication transmission of LED display equipment, closed-circuit monitoring equipment, communication equipment, etc.

产品描述 Description

- 支持5类、超5类及6类网线 Support category 5、super category 5 and category 6 network cables

- 工业级防尘防水 Industrial dustproof and waterproof

- 锁紧方式 Locking Mode: 螺纹连接 threaded connection

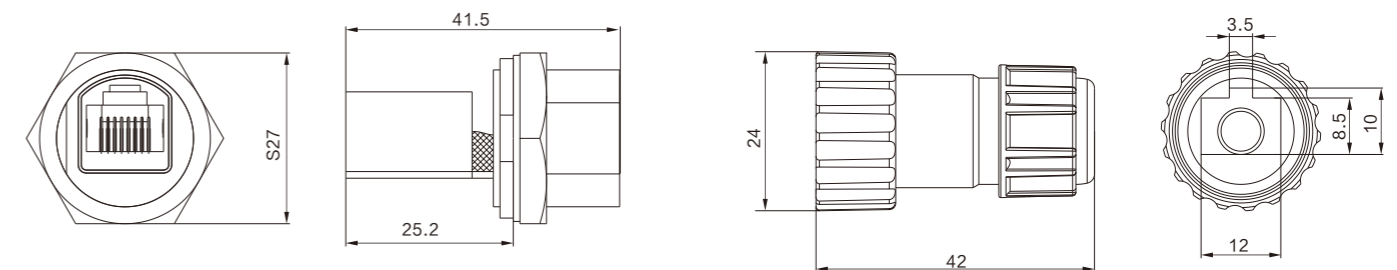
性能参数 Specification

- 额定电压 Voltage Rating: 125V
- 额定电流 Current Rating: 1A
- 传输速率 Transmission speed: 100Mbps
- 绝缘电阻 Insulation Resistance: $\geq 500M\Omega$
- 耐电压 Dielectric Withstanding Voltage: 1000V AC
- 工作温度 Temperature Range: -40℃ ~ +85℃
- 防护等级 IP Code: IP67
- 机械寿命 Mechanical Life: ≥ 500 次

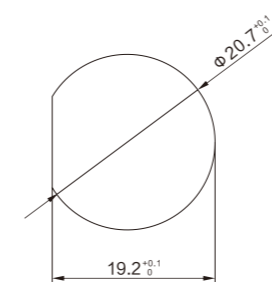


YG583 插头

YG583 插座



YG583 面板开孔尺寸



YG909电连接器

YG909 CONNECTOR INTRODUCTION

应用范围 Application

- 充电机、DCDC、高压盒OBC、DCDC、PDU

产品描述 Description

- 卡口快速连接 Bayonet Coupling
- 螺旋结构 Helical Structure
- 线径范围 Cable Range: 0.5~1.5mm²
- 防呆键位 Poka-yoke

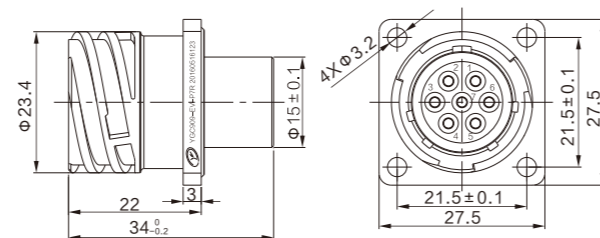
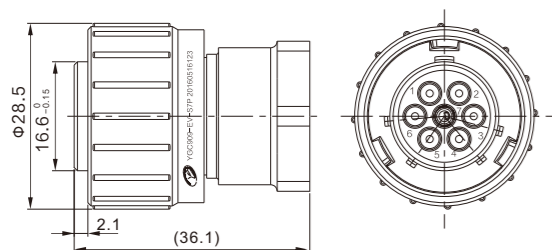
性能参数 Specification

- 芯数Pins: 7
- 额定电流 Rated Current: 5A(0.5mm²)、5A(0.75mm²)、8A(1mm²)、10A(1.5mm²)
- 额定电压 Rated Voltage: 24V
- 绝缘电阻 Insulation Resistance: ≥5000MΩ
- 耐电压 Dielectric Withstanding Voltage: 1000V AC
- 工作温度 Temperature Range: -40~+ 125° C
- 防护等级 IP Code: IP67



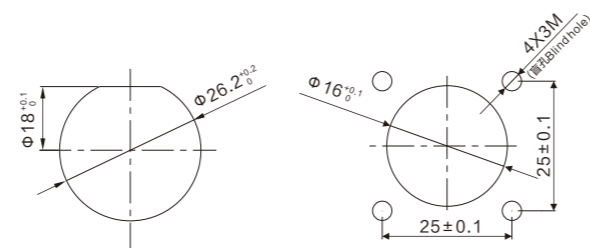
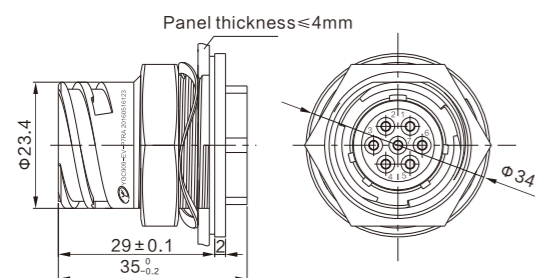
YGC909-EV-S7P插头

YGC909-EV-S7P插座



YGC909-EV-P7RA插座

YGC909 7芯安装开孔尺寸



YG927电连接器

YG927 CONNECTOR INTRODUCTION

应用范围 Application

- 电池包、高压盒 Battery Pack、PDU

产品描述 Description

- 线径范围 Helical Structure
- 螺旋结构 Helical Structure
- 线径范围 Cable Range: 0.5mm²~1.5mm²
- 防呆键位 Poka-yoke

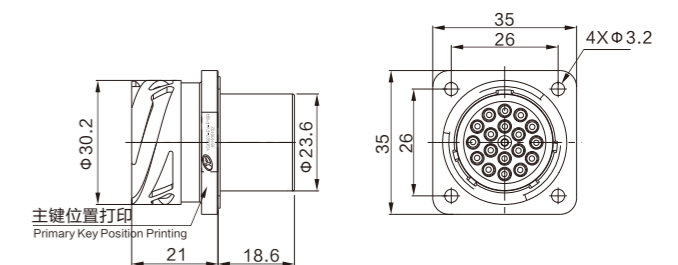
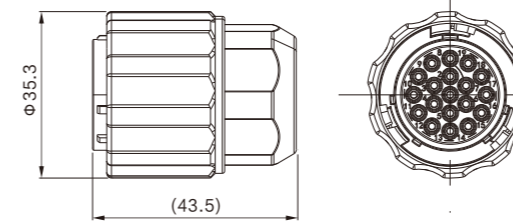
性能参数 Specification

- 芯数Pins: 19
- 额定电流 Rated Current: 5A(0.5mm²)、5A(0.75mm²)、8A(1mm²)、10A(1.5mm²)
- 额定电压 Rated Voltage: 24V
- 耐电压 Dielectric Withstanding Voltage: 1000V AC
- 绝缘电阻 Insulation resistance: ≥5000MΩ
- 工作温度 Temperature Range: -40° C ~ +125° C
- 防护等级 IP Code: IP67



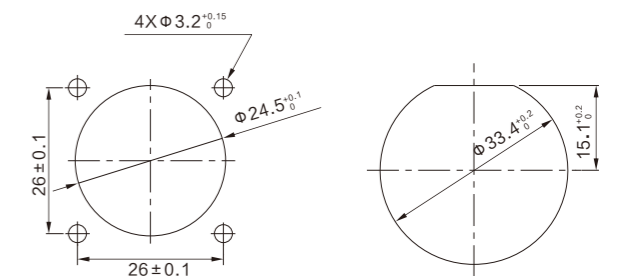
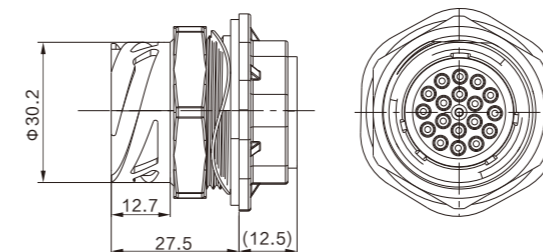
YGC927-EV-S19P插头

YGC927-EV-P19R插座



YGC927-EV-P19RA插座

YGC327 19芯安装开孔尺寸



141019电连接器

141019 CONNECTOR INTRODUCTION



应用范围 Application

- 141019系列连接器适用于各类电气设备控制系统之间的信号传输；接触件与导线的端接形式为压接式，插头与插座的连接形式为螺旋槽连接，接触可靠，操作简便。
- 141019 series connectors are suitable for signal transmission between various electrical equipment control systems; The termination form of contact and wire is crimping, and the connection form of plug and socket is spiral groove connection, which has reliable contact and simple operation.

产品描述 Description

- 机械寿命 Mechanical Life: 200 次
- 防护等级 IP Code: IP67 (插合后 After plug in)
- 工作温度 Temperature Range: -40℃ ~ +85℃
- 尾部端接方式 Termination Methods: 压接 Crimping
- 线缆规格 Cable Specification

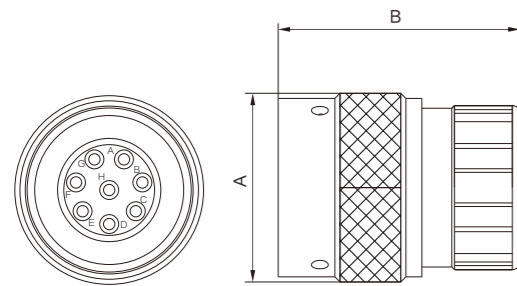
连接器芯数 Pins	8	12	17	19
线缆规格 Cable Specification(mm ²)	≤ 0.8	≤ 1.3	≤ 0.32(Φ 1.0mm) ≤ 0.75(Φ 1.6mm)	≤ 0.32

性能参数 Specification

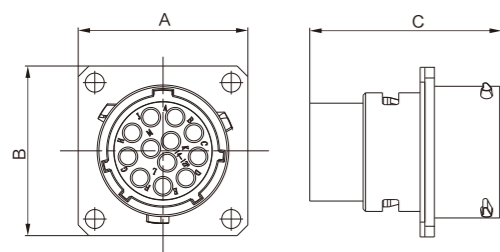
● 连接器芯数 Pins	8	12	17	19
● 额定电压(V) Voltage Rating	250V	250V	350V	150V
● 额定电流(A) Current Rating	13A	13A	13A(Φ 1.6mm) 7.5A(Φ 1mm)	7.5A
● 接触电阻 Contact Resistance	≤ 2mΩ	≤ 3mΩ	≤ 2mΩ (Φ 1.6mm) ≤ 5mΩ (Φ 1mm)	≤ 5mΩ
● 绝缘电阻 Insulation Resistance	≥ 2000MΩ	≥ 2000MΩ	≥ 1500MΩ	≥ 1500MΩ
● 耐电压 Dielectric Withstanding Voltage	2000V AC	2000V AC	1500V AC	1500V AC

● 型谱 Spectrum	芯数			
	8	12	17	19
绝缘体正面图				

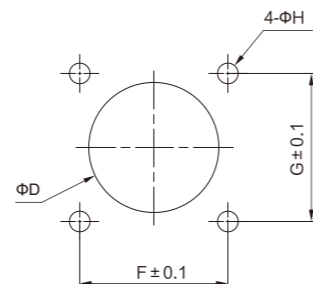
141019 插头



141019 插座



141019 面板安装尺寸



141019电连接器

141019 CONNECTOR INTRODUCTION

插座尺寸

芯数Pins	A	B	C	D	E	F	G
8	26.2	26.2	232.5	20	20.7	20.7	3.3
12	28.6	28.6	32.3	20.2	23	23	3.2
17	28.5	28.5	26.8	21.5	23	23	3.2
19	28.9	28.9	32.5	21.5	23	23	3.2

插头尺寸

芯数Pins	A	B
8	26.4	32.4
12	29	41.4
17	29	31.8
19	29	32.4

D-SUB 9PIN电连接器

D-SUB 9PIN CONNECTOR INTRODUCTION

应用范围 Application

- 通信设备、储能设备等电源模块功率、信号传输。
- Power and signal transmission of power modules such as communication equipment and energy storage equipment.

产品描述 Description

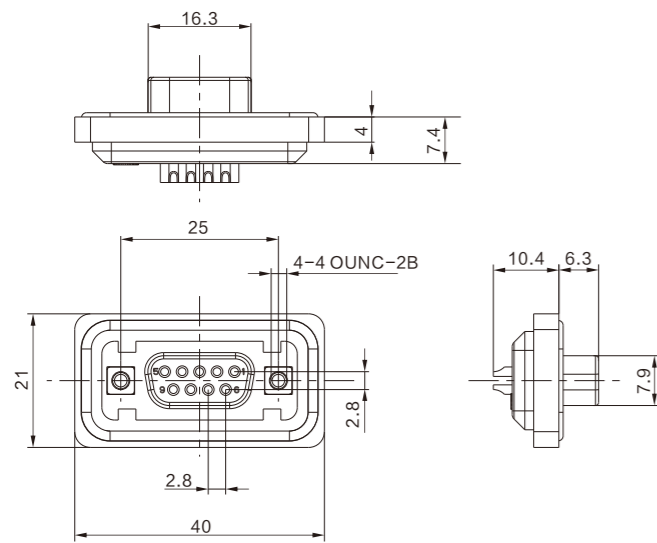
- 安装方式 Installation Methods: 螺钉锁紧 Screw locking

性能参数 Specification

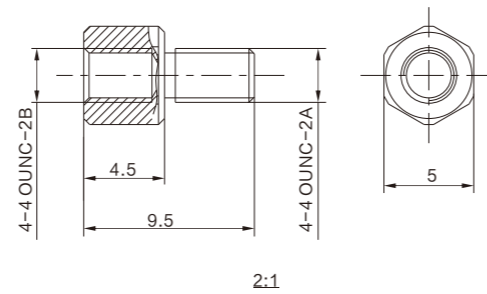
- 额定电流 Current Rating: 3A
- 额定电压 Voltage Rating: 60V AC/DC
- 绝缘电阻 Insulation Resistance: $\geq 1000M\Omega$
- 耐电压 Dielectric Withstanding Voltage: 500V AC
- 工作温度 Temperature Range: $-40^{\circ}\text{C} \sim +125^{\circ}\text{C}$
- 机械寿命 Mechanical Life: 500次



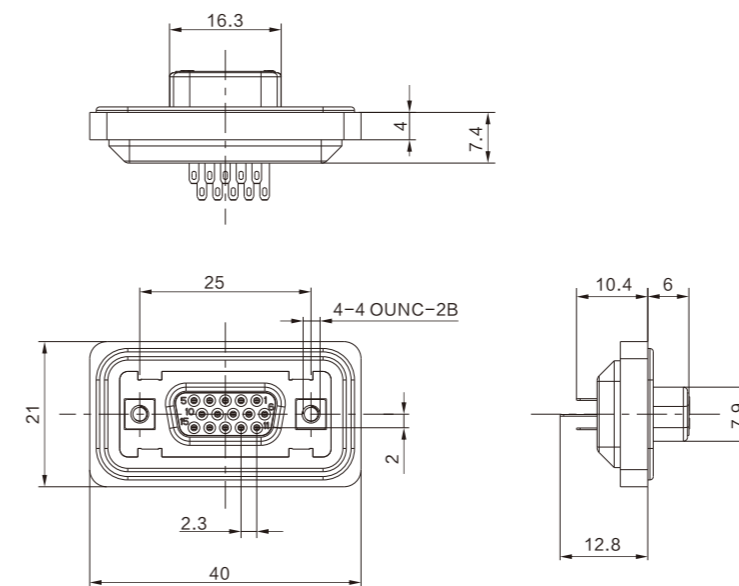
D-SUB 9PIN 插座



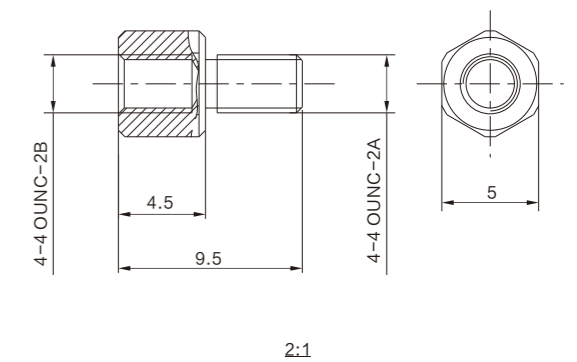
面板固定螺钉



D-SUB 15PIN 插座



面板固定螺钉



D-SUB 15PIN电连接器

D-SUB 15PIN CONNECTOR INTRODUCTION

应用范围 Application

- 通信设备、储能设备等电源模块功率、信号传输。
- Power and signal transmission of power modules such as communication equipment and energy storage equipment.

产品描述 Description

- 安装方式 Installation Methods: 螺钉锁紧 Screw locking

性能参数 Specification

- 额定电流 Current Rating: 3A
- 额定电压 Voltage Rating: 60V AC/DC
- 绝缘电阻 Insulation Resistance: $\geq 1000M\Omega$
- 耐电压 Dielectric Withstanding Voltage: 500V
- 工作温度 Temperature Range: $-40^{\circ}\text{C} \sim +125^{\circ}\text{C}$
- 机械寿命 Mechanical Life: 500次



YG619电连接器

YG619 CONNECTOR INTRODUCTION

应用范围 Application

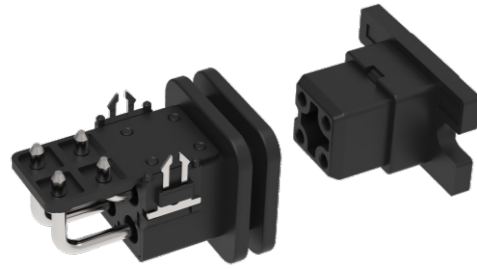
- 通信设备、充电设备等电源模块的功率传输。
- Power transmission of power modules such as communication equipment, charging equipment.

产品描述 Description

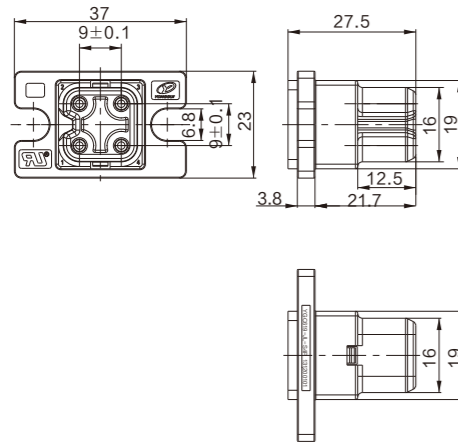
- 端接方式 Termination Methods: 针端弯式焊板, 孔端压接 Bent plate connection in pin terminal, Crimping in hole terminal
- 锁紧方式 Lock mode: 线对板 Line to Board
- 线缆规格 Cable Specification: 3.3mm² ~ 5.26mm² (AWG10 ~ AWG12)
- 认证 Identification: UL
- 塑料外壳, 防错插 Plastic shell, Fool-proofing design

性能参数 Specification

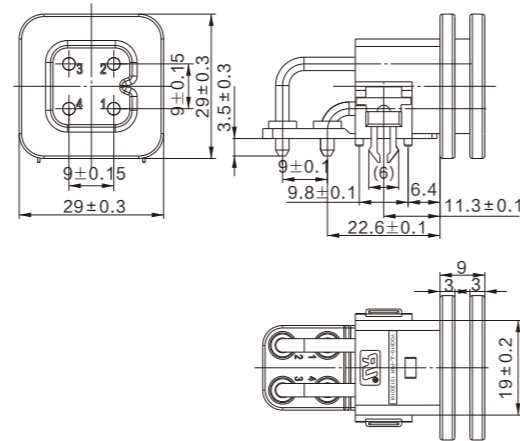
- 芯数 Pins: 4
- 额定电流 Current Rating: 40A
- 额定电压 Voltage Rating: 500V AC
- 绝缘电阻 Insulation Resistance: ≥5000MΩ
- 耐电压 Dielectric Withstanding Voltage: 3000V AC
- 工作温度 Temperature Range: -40℃ ~ +80℃
- 防护等级 IP Code: IP20
- 机械寿命 Mechanical Life: 500次



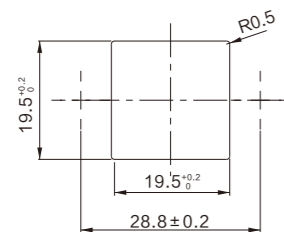
YGC619-JL-S4P插头



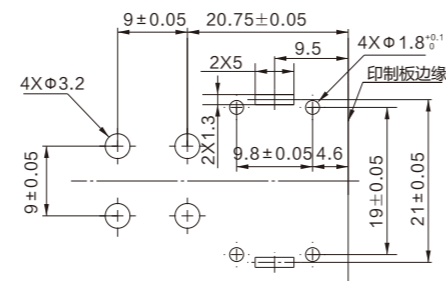
YGC619-JL-P4R插座



YG619-JL-S4P插头开孔尺寸



YGC619-JL-P4R插座开孔尺寸



YG689电连接器

YG689 CONNECTOR INTRODUCTION

应用范围 Application

- 通信设备、充电设备等电源模块的功率传输。
- Power transmission of power modules such as communication equipment, charging equipment.

产品描述 Description

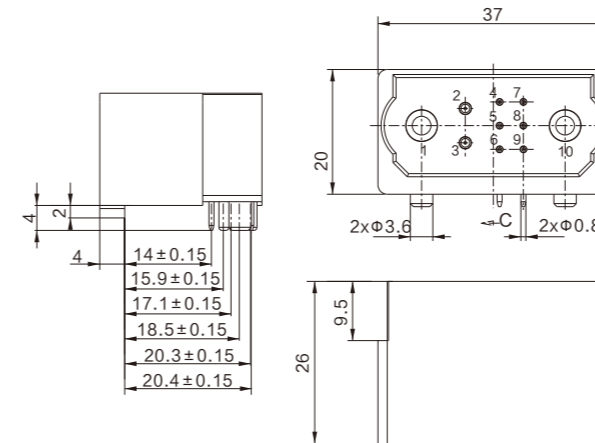
- 端接方式 Termination Methods: 针端弯式焊板, 孔端压接/螺钉锁紧 Bent plate connection in pin terminal, Crimping/ Screw in hole terminal
- 锁紧方式 Lock mode: 线对板 Line to Board
- 线缆规格 Cable Specification: Φ2: 2.5mm² ~ 3mm², Φ1: 0.25mm² ~ 0.32mm²
- 塑料外壳, 防错插 Plastic shell, Fool-proofing design

性能参数 Specification

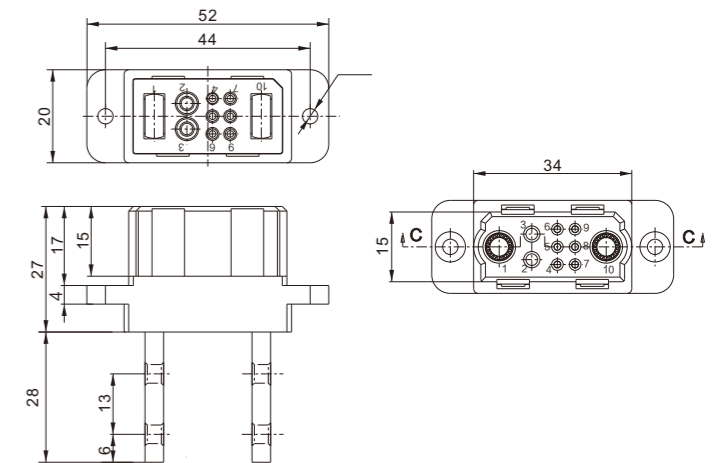
- 芯数 Pins: 10
- 额定电流 Current Rating: 75A (Φ5)、15A (Φ2)、1A (Φ1)
- 额定电压 Voltage Rating: 600V AC
- 绝缘电阻 Insulation Resistance: ≥5000MΩ
- 耐电压 Dielectric Withstanding Voltage: 1000V AC
- 工作温度 Temperature Range: -40℃ ~ +80℃
- 防护等级 IP Code: IP20
- 机械寿命 Mechanical Life: 500次



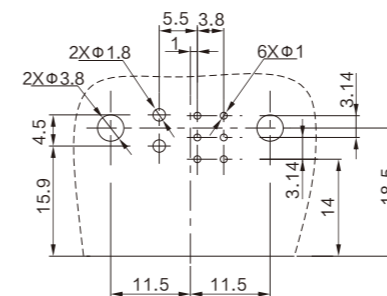
YG689-P10PW插头



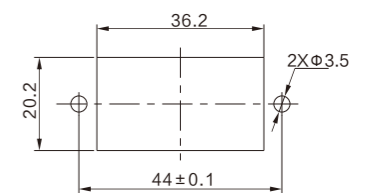
YGC689-S10R插座



YG689-P10PW插头开孔尺寸



YGC689-S10R插座开孔尺寸



YG690电连接器

YG690 CONNECTOR INTRODUCTION

应用范围Application

- 通信设备、充电设备等电源模块的功率传输。
- Power transmission of power modules such as communication equipment, charging equipment.

产品描述 Description

- 端接方式 Termination Methods: 针端弯式焊板, 孔端压接/螺钉锁紧
Bent plate connection in pin terminal,
Crimping/Screw in hole terminal
- 锁紧方式 Lock mode: 线对板 Line to Board
- 线缆规格 Cable Specification: 2.5mm² ~ 6mm² (AWG10 ~ AWG14)
- 塑料外壳, 防错插 Plastic shell, Fool-proofing design

性能参数 Specification

- 芯数 Pins: 4
- 额定电流 Current Rating: 35A
- 额定电压 Voltage Rating: 600V AC
- 绝缘电阻 Insulation Resistance: ≥5000MΩ
- 耐电压 Dielectric Withstanding Voltage: 3000V AC
- 工作温度 Temperature Range: -40℃ ~ +80℃
- 防护等级 IP Code: IP20
- 机械寿命 Mechanical Life: 500次



141027B电连接器

141027B CONNECTOR INTRODUCTION

应用范围Application

- 通信设备、充电设备以及储能设备等电源模块的功率传输。
- Power transmission of power modules such as communication equipment, charging equipment and energy storage equipment.

产品描述 Description

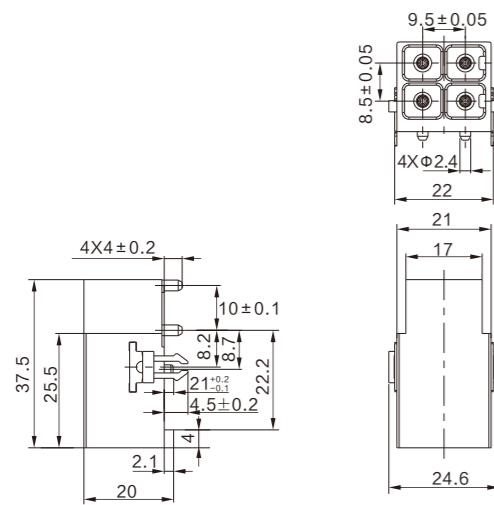
- 端接方式 Termination Methods: 针端弯式焊板, 孔端压接 Bent plate connection in Pin terminal, crimping in hole terminal.
- 锁紧方式 Lock mode: 线对板 Line to Board
- 线缆规格 Cable specification: 10mm² (AWG 7)
- 塑料外壳, 键位防呆 Plastic shell, Fool-proofing design

性能参数 Specification

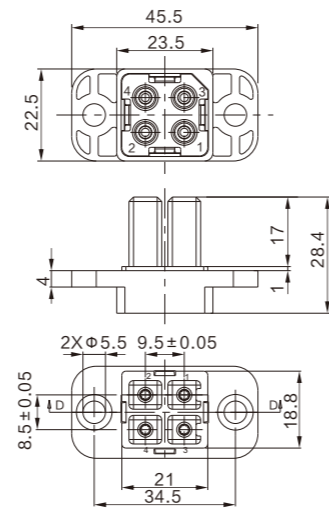
- 芯数 Pins: 4
- 额定电流 Current Rating: 40A
- 额定电压 Voltage Rating: 600V AC
- 绝缘电阻 Insulation Resistance: ≥3000MΩ
- 耐电压 Dielectric Withstanding Voltage: 3000V AC
- 工作温度 Temperature Range: -40℃ ~ +125℃
- 防护等级 IP Code: IP20
- 机械寿命 Mechanical Life: 500次



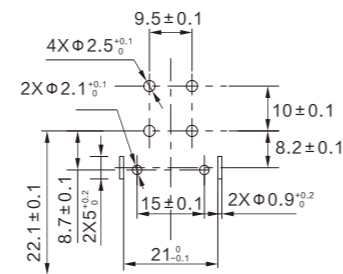
YGC690-P4PW插头



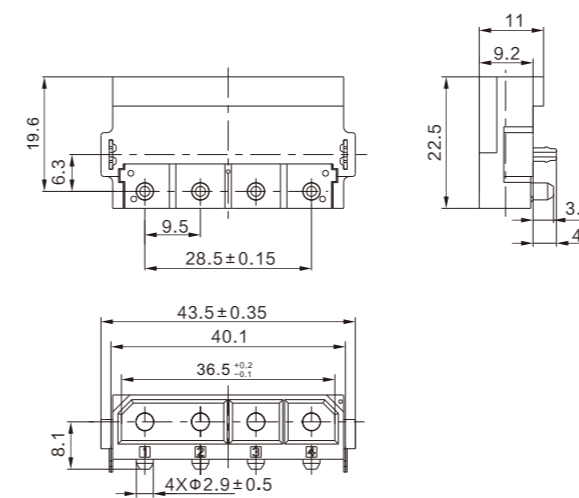
YGC690-S4R插座



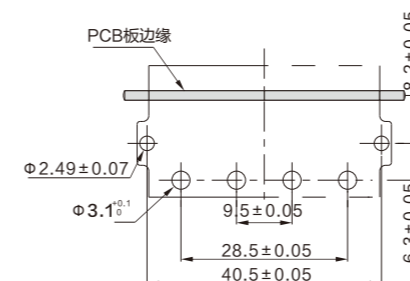
YGC690-P4PW插头开孔尺寸



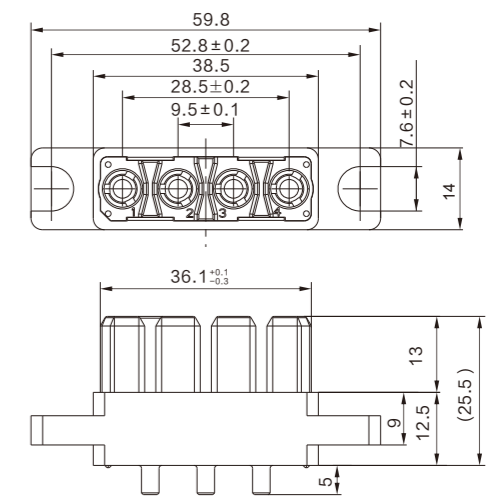
141027B插头



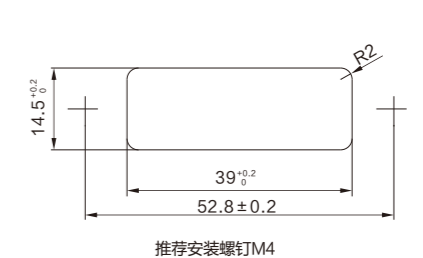
141027B插头开孔尺寸



141027B插座



141027B插座开孔尺寸



141030A1电连接器

141030A1 CONNECTOR INTRODUCTION

应用范围 Application

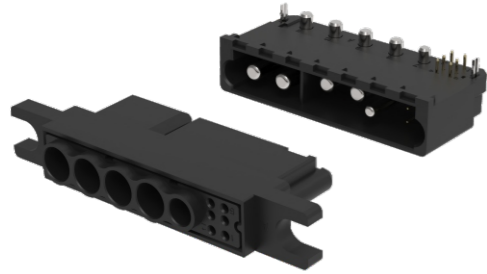
- 通信设备、充电设备以及储能设备等电源模块的功率、信号传输。
- Power and signal transmission of power modules such as communication equipment, charging equipment and energy storage equipment.

产品描述 Description

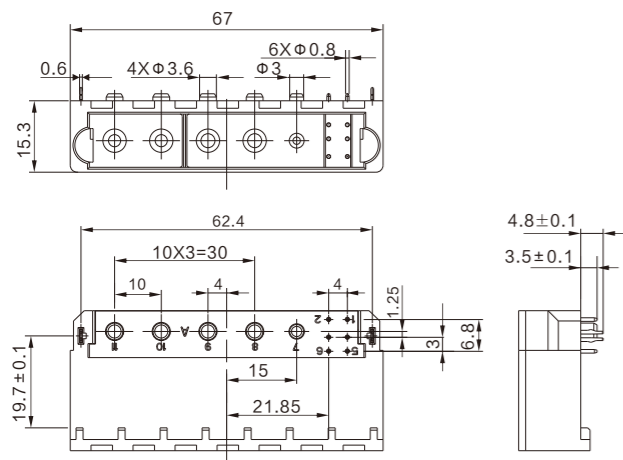
- 端接方式 Termination Methods: 针端弯式焊板, 孔端压接 Bent plate connection in Pin terminal, crimping in hole terminal.
- 锁紧方式 Lock mode: 线对板 Line to Board
- 线缆规格 Cable specification: 功率 Power: 8.4mm²; 信号 Signal: 0.34mm²
- 塑料外壳, 键位防呆 Plastic shell, Fool-proofing design

性能参数 Specification

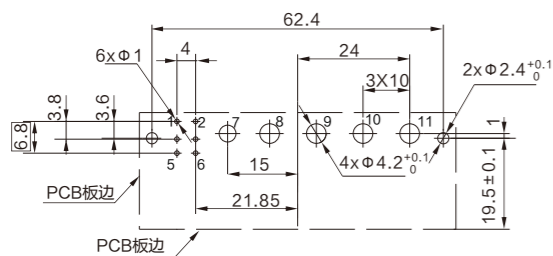
- 芯数 Pins: 4+1+6
- 额定电流 Current Rating: 75A/3A
- 额定电压 Voltage Rating: 1000V DC/48V DC
- 绝缘电阻 Insulation Resistance: ≥3000MΩ
- 耐电压 Dielectric Withstanding Voltage: 3000V AC/600V AC
- 工作温度 Temperature Range: -40℃ ~ +125℃
- 防护等级 IP Code: IP20
- 机械寿命 Mechanical Life: 500 次



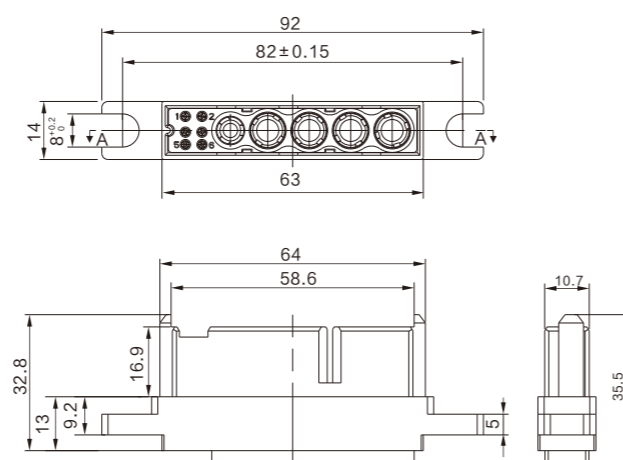
141030A1插头



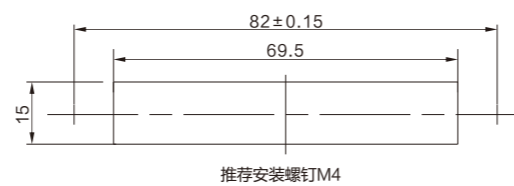
141030A1插头开孔尺寸



141030A1插座



141030A1插座开孔尺寸



141030C电连接器

141030C CONNECTOR INTRODUCTION

应用范围 Application

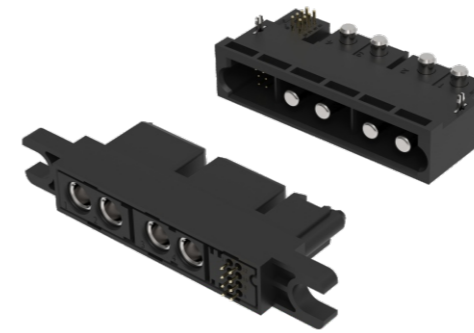
- 通信设备、充电设备以及储能设备等电源模块的功率、信号传输。
- Power and signal transmission of power modules such as communication equipment, charging equipment and energy storage equipment.

产品描述 Description

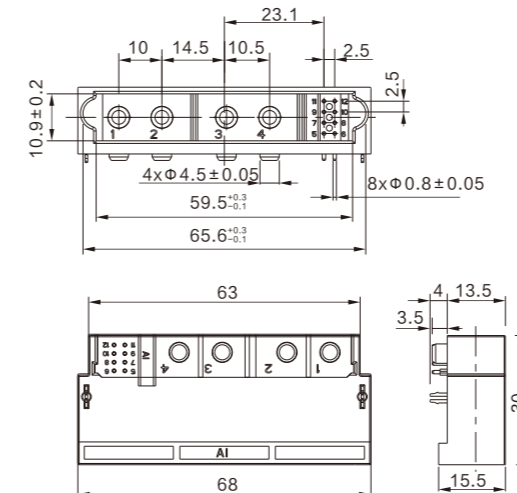
- 端接方式 Termination Methods: 针端弯式焊板, 孔端压接 Bent plate connection in Pin terminal, crimping in hole terminal.
- 锁紧方式 Lock mode: 线对板 Line to Board
- 线缆规格 Cable specification: 功率 Power: 8.4mm²; 信号 Signal: 0.34mm²
- 塑料外壳, 键位防呆 Plastic shell, Fool-proofing design

性能参数 Specification

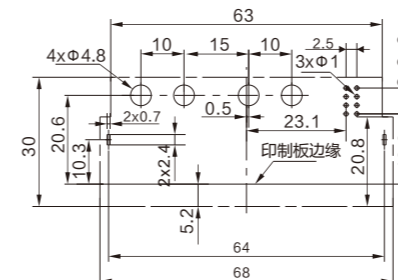
- 芯数 Pins: 4+8
- 额定电流 Current Rating: 75A/3A
- 额定电压 Voltage Rating: 1000V DC/48V DC
- 绝缘电阻 Insulation Resistance: ≥3000MΩ
- 耐电压 Dielectric Withstanding Voltage: 3000V AC/500V AC
- 工作温度 Temperature Range: -40℃ ~ +125℃
- 防护等级 IP Code: IP20
- 机械寿命 Mechanical Life: 500 次



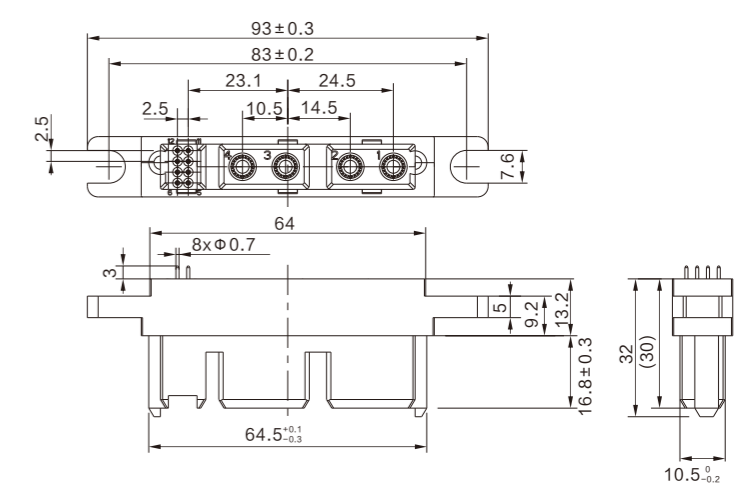
141030C插头



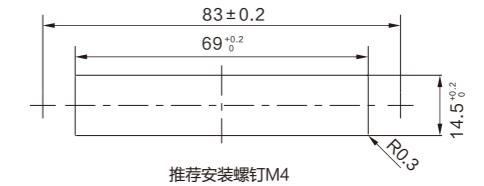
141030C插头开孔尺寸



141030C插座



141030C插座开孔尺寸



141054电连接器

141054 CONNECTOR INTRODUCTION

应用范围 Application

- 通信设备、充电设备以及储能设备等电源模块的功率传输。
- Power transmission of power modules such as communication equipment, charging equipment and energy storage equipment.

产品描述 Description

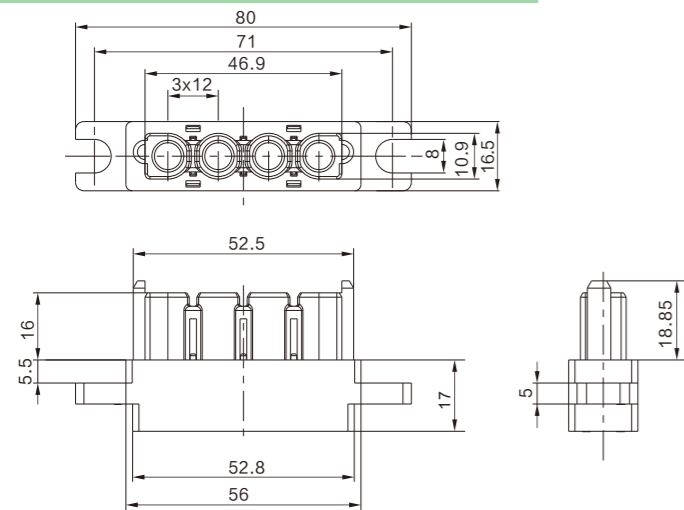
- 端接方式 Termination Methods: 针端弯式焊板, 孔端压接 Bent plate connection in Pin terminal, crimping in hole terminal.
- 锁紧方式 Lock mode: 线对板 Line to Board
- 线缆规格 Cable specification: 13.3mm² ~ 21mm² (AWG4 ~ AWG6)
- 塑料外壳, 键位防呆 Plastic shell, Fool-proofing design

性能参数 Specification

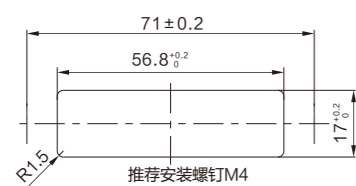
- 芯数 Pins: 4
- 额定电流 Current Rating: 100A
- 额定电压 Voltage Rating: 380V AC
- 绝缘电阻 Insulation Resistance: $\geq 3000M\Omega$
- 耐电压 Dielectric Withstanding Voltage: 2000V AC
- 工作温度 Temperature Range: -40℃ ~ +125℃
- 防护等级 IP Code: IP20
- 机械寿命 Mechanical Life: 500次



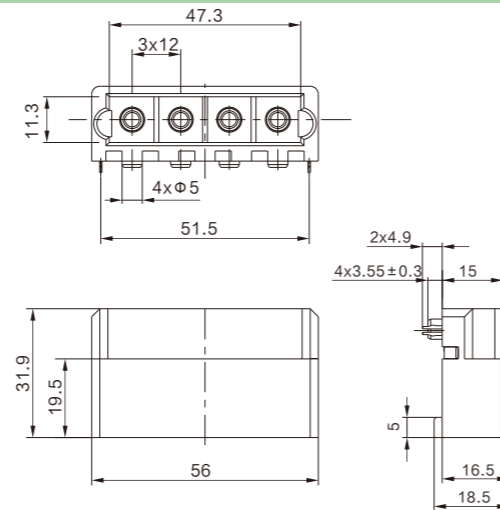
141054-JL-S4P插头



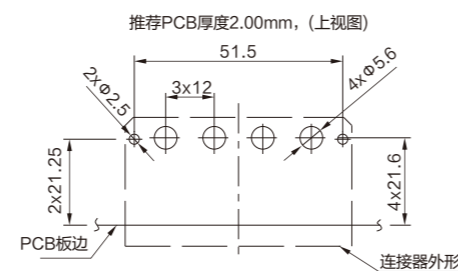
141054-JL-S4P插头



141054-JL-P4RW插座



141054-JL-P4RW插座开孔尺寸



141054B电连接器

141054B CONNECTOR INTRODUCTION

应用范围 Application

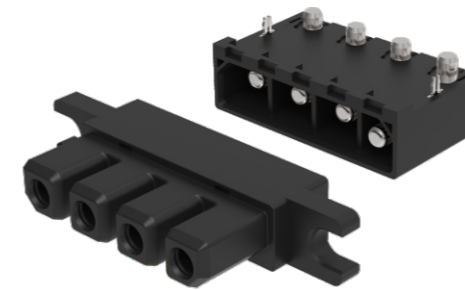
- 通信设备、充电设备以及储能设备等电源模块的功率传输。
- Power transmission of power modules such as communication equipment, charging equipment and energy storage equipment.

产品描述 Description

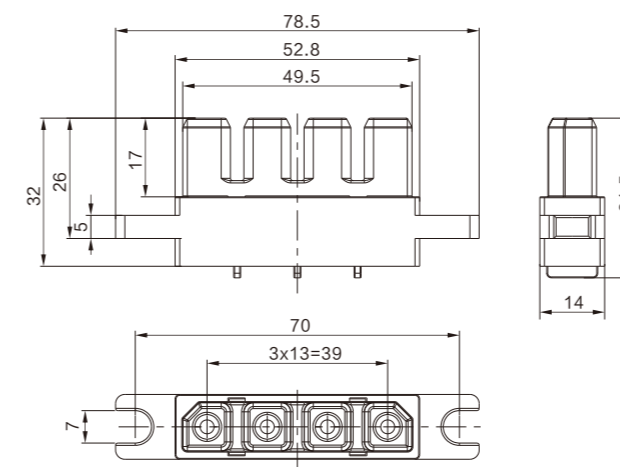
- 端接方式 Termination Methods: 针端弯式焊板, 孔端压接 Bent plate connection in Pin terminal, crimping in hole terminal.
- 锁紧方式 Lock mode: 线对板 Line to Board
- 线缆规格 Cable specification: 13.3mm² ~ 21mm² (AWG4 ~ AWG6)
- 塑料外壳, 键位防呆 Plastic shell, Fool-proofing design

性能参数 Specification

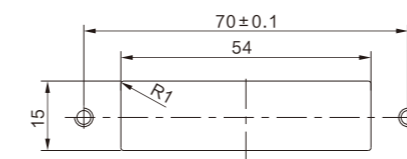
- 芯数 Pins: 4
- 额定电流 Current Rating: 70A
- 额定电压 Voltage Rating: 1000V DC
- 绝缘电阻 Insulation Resistance: $\geq 1000M\Omega$
- 耐电压 Dielectric Withstanding Voltage: 2500V AC
- 工作温度 Temperature Range: -40℃ ~ +125℃
- 防护等级 IP Code: IP20
- 机械寿命 Mechanical Life: 500次



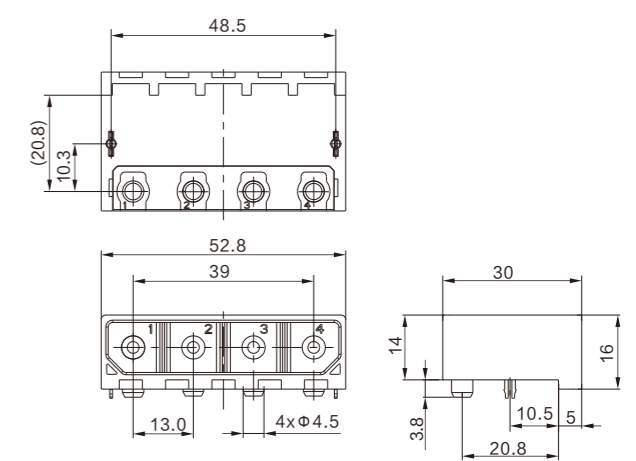
141054B-JL-S4P插头



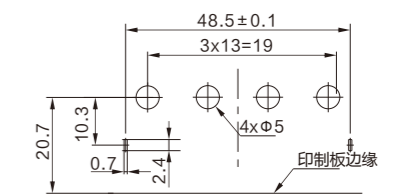
141054B-JL-S4P插头开孔尺寸



141054B-JL-P4RW插座



141054B-JL-P4RW插座开孔尺寸



141095电连接器

141095 CONNECTOR INTRODUCTION

应用范围 Application

- 通信设备、充电设备以及储能设备等电源模块的功率、信号传输。
- Power and signal transmission of power modules such as communication equipment, charging equipment and energy storage equipment.

产品描述 Description

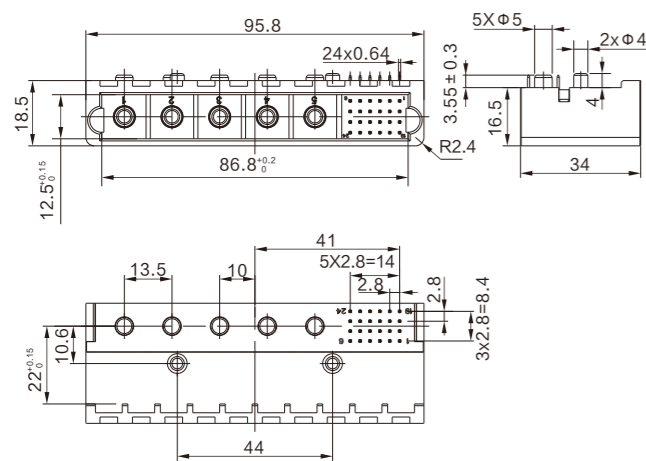
- 端接方式 Termination Methods: 针端弯式焊板, 孔端压接 Bent plate connection in pin terminal, Crimping in hole terminal
- 锁紧方式 Lock mode: 线对板 Line to Board
- 接线规格 Cable Specification: 功率 Power: 8.4mm²/13mm²/21mm²
信号 Signal: 0.25mm²
- 塑料外壳, 防错插 Plastic shell, Fool-proofing design

性能参数 Specification

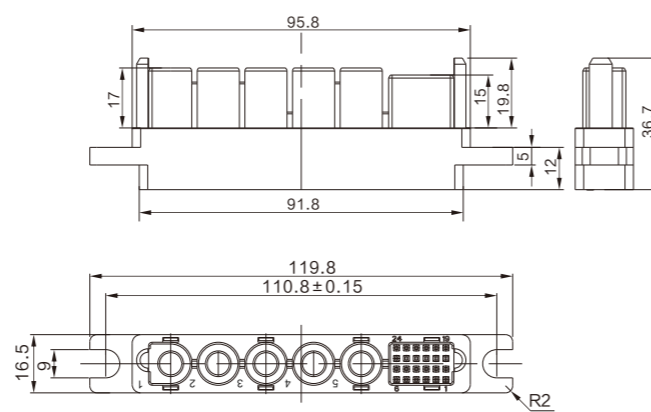
- 芯数 Pins: 5+24
- 额定电流 Current Rating: 100A/1A
- 额定电压 Voltage Rating: 600V DC/60V DC
- 绝缘电阻 Insulation Resistance: ≥5000MΩ
- 耐电压 Dielectric Withstanding Voltage: 3000V AC/500V AC
- 工作温度 Temperature Range: -40℃ ~ +125℃
- 防护等级 IP Code: IP20
- 机械寿命 Mechanical Life: 100次



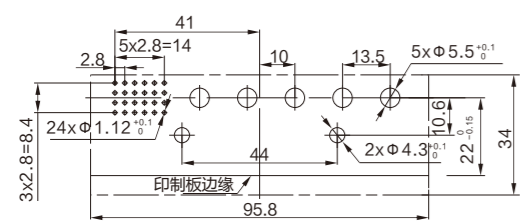
141095-JL-P(5+24)PW插头



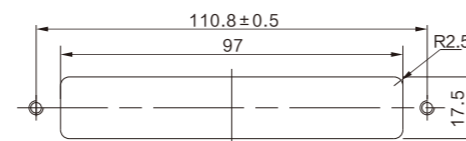
141095-JL-S(5+24)R插座



141095-JL-P(5+24)PW插头开孔尺寸



141095-JL-S(5+24)R插座开孔尺寸



141100电连接器

141100 CONNECTOR INTRODUCTION

应用范围 Application

- 通信设备、充电设备以及储能设备等电源模块的功率、信号传输。
- Power and signal transmission of power modules such as communication equipment, charging equipment and energy storage equipment.

产品描述 Description

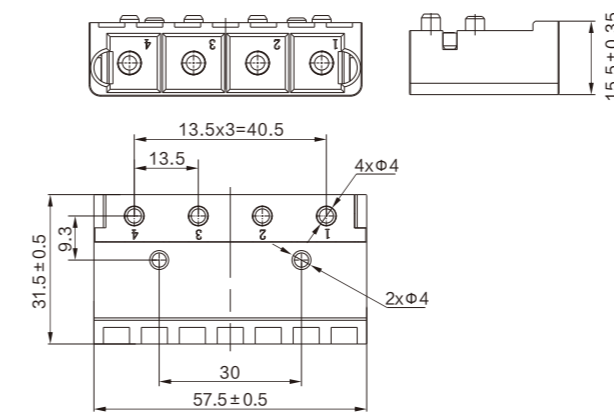
- 端接方式 Termination Methods: 针端弯式焊板, 孔端压接 Bent plate connection in pin terminal, Crimping in hole terminal
- 锁紧方式 Lock mode: 线对板 Line to Board
- 接线规格 Cable Specification: 10mm² ~ 16mm² (AWG5 ~ AWG7)
- 塑料外壳, 防错插 Plastic shell, Fool-proofing design

性能参数 Specification

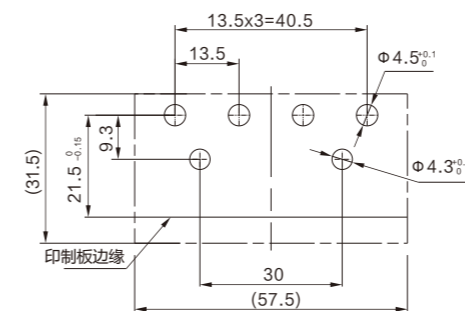
- 芯数 Pins: 4
- 额定电流 Current Rating: 100A
- 额定电压 Voltage Rating: 600V AC
- 绝缘电阻 Insulation Resistance: ≥3000MΩ
- 耐电压 Dielectric Withstanding Voltage: 2500V AC
- 工作温度 Temperature Range: -40℃ ~ +125℃
- 防护等级 IP Code: IP20
- 机械寿命 Mechanical Life: 500次



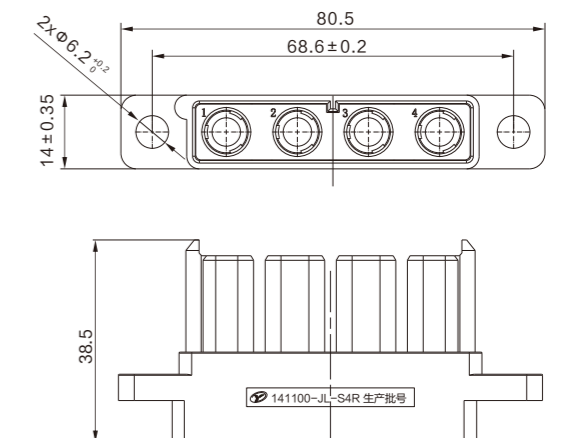
141100-JL-P4PW插头



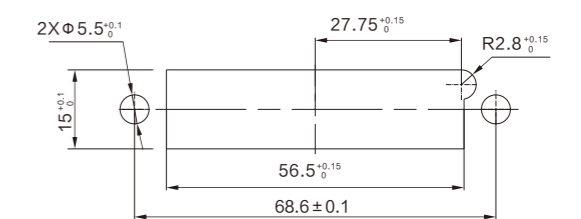
141100-JL-P4PW插头开孔尺寸



141100-JL-S4R插座



141100-JL-S4R插座开孔尺寸



141025电连接器

141025 CONNECTOR INTRODUCTION



应用范围 Application

- 通信设备、充电设备以及储能设备等电源模块的功率、信号传输。
- Power and signal transmission of power modules such as communication equipment, charging equipment and energy storage equipment.

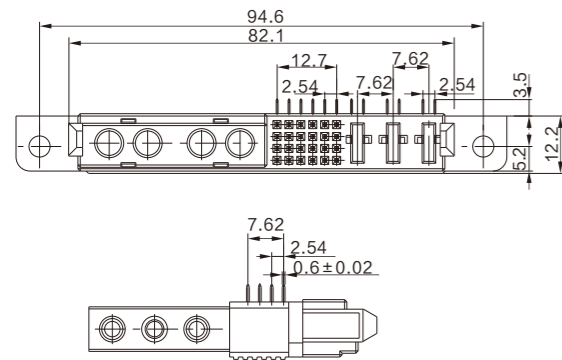
产品描述 Description

- 端接方式 Termination Methods: 针端弯式焊板, 孔端弯式焊板加螺钉锁紧 Bent plate connection in Pin terminal, Bent plate connection and screw lock in hole terminal.
- 锁紧方式 Lock mode: 板对板 Board to Board
- 塑料外壳, 键位防呆 Plastic shell, Fool-proofing design

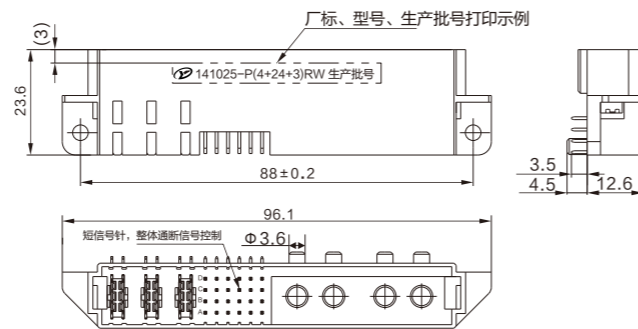
性能参数 Specification

- 芯数 Pins: 4+24+3
- 额定电流 Current Rating: 100A/2.5A/20A
- 额定电压 Voltage Rating: 400V /12.5V/220V
- 绝缘电阻 Insulation Resistance: $\geq 1000M\Omega$
- 耐电压 Dielectric Withstanding Voltage: 1500V/1000V
- 工作温度 Temperature Range: $-40^{\circ}\text{C} \sim +125^{\circ}\text{C}$
- 防护等级 IP Code: IP20
- 机械寿命 Mechanical Life: 200 次

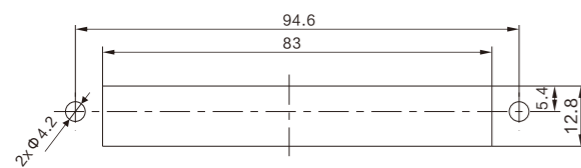
141025-S(4+24+3)PW插头



141025-P(4+24+3)RW插座



141025-S(4+24+3)PW插头开孔尺寸



141057A电连接器

141057A CONNECTOR INTRODUCTION



应用范围 Application

- 直流电源系统、UPS电源、服务器电源、数据终端。
- Direct-current power source system, UPS power, Service power, Data terminal

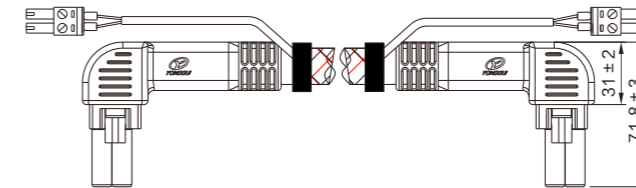
产品描述 Description

- 直头、弯头两种规格 Straight&Bent
- 锁紧方式 Lock mode: 挂扣 Buckle
- 电缆规格 Cable specification: 10mm², (长度可定制 Customizable)
- 插头塑封, 防呆设计 Plastic sealing of plug, Fool-proofing design

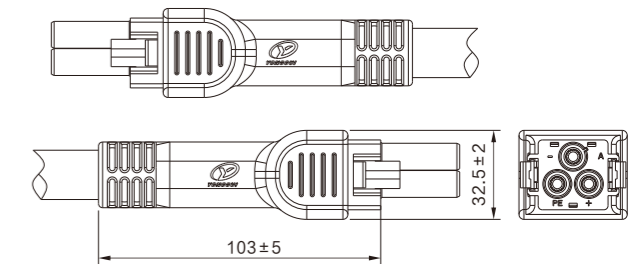
性能参数 Specification

- 芯数 Pins: 3
- 额定电流 Current Rating: 75A (UL)、65A (CUL)
- 额定电压 Voltage Rating: 600V AC
- 绝缘电阻 Insulation Resistance: $\geq 500M\Omega$
- 耐电压 Dielectric Withstanding Voltage: 4000V AC
- 工作温度 Temperature Range: $-40^{\circ}\text{C} \sim +105^{\circ}\text{C}$
- 防护等级 IP Code: IP20
- 机械寿命 Mechanical Life: 500 次

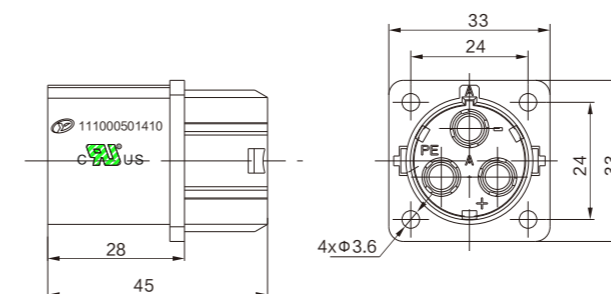
141057A 3芯弯头线缆组件



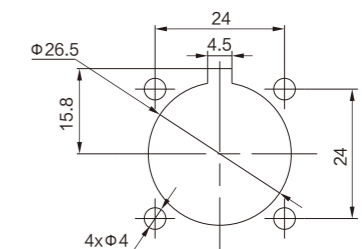
141057A 3芯直头线缆组件



141057A插座

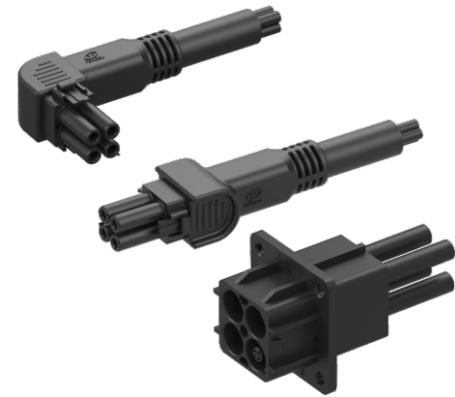


141057A开孔尺寸



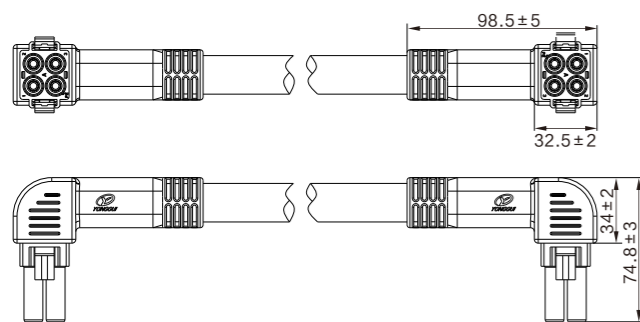
141057B电连接器

141057B CONNECTOR INTRODUCTION

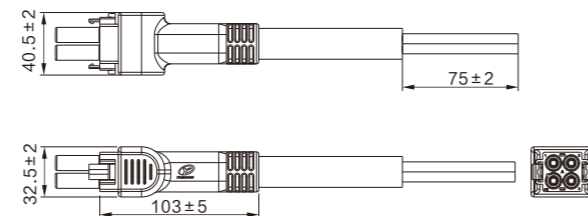


应用范围 Application
● 直流电源系统、UPS电源、服务器电源、数据终端。
● Direct-current power source system、UPS power、Service power、Data terminal
产品描述 Description
● 直头、弯头两种规格 Straight&Bent
● 锁紧方式：挂扣 Lock mode: Buckle
● 电缆规格 Cable specification: 10mm ² , (长度可定制 Customizable)
● 插头塑封，防呆设计 Plastic sealing of plug, Fool-proofing design
性能参数 Specification
● 芯数 Pins: 4
● 额定电流 Current Rating: 75A (UL)、65A (CUL)
● 额定电压 Voltage Rating: 600V AC
● 绝缘电阻 Insulation Resistance: ≥500MΩ
● 耐电压 Dielectric Withstanding Voltage: 4000V AC
● 工作温度 Temperature Range: -40℃ ~ +105℃
● 防护等级 IP Code: IP20
● 机械寿命 Mechanical Life: 500次

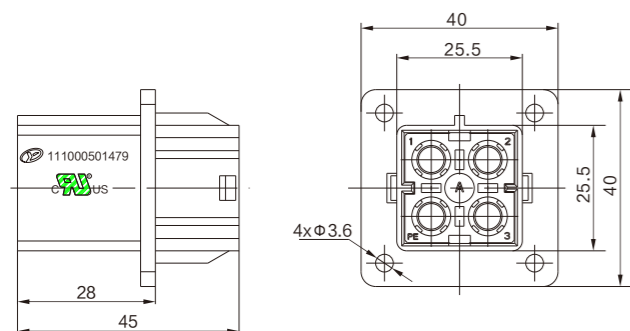
141057B 4芯弯头线缆组件



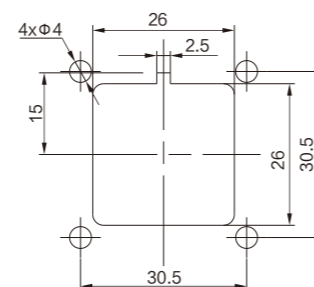
141057B 4芯直头线缆组件



141057B插座



141057B开孔尺寸



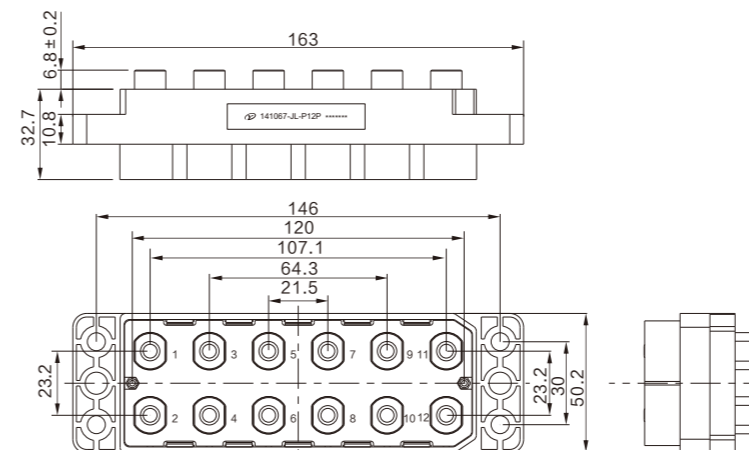
141067 12芯电连接器

141067 12-Pin CONNECTOR INTRODUCTION

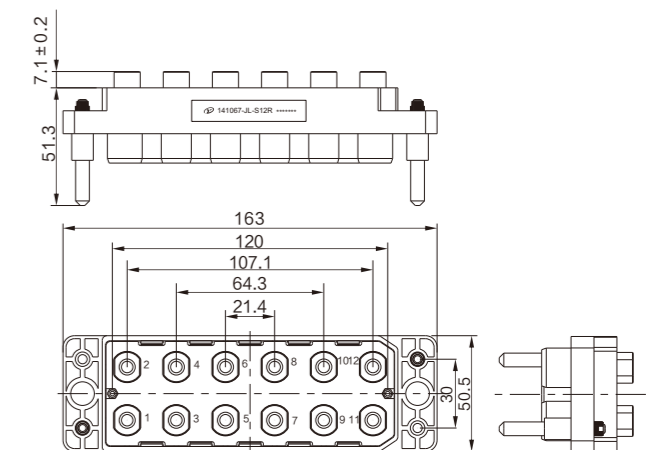


应用范围 Application
● 通信设备、充电设备以及储能设备等电源模块的功率、信号传输。
● Power and signal transmission of power modules such as communication equipment, charging equipment and energy storage equipment.
产品描述 Description
● 针端、孔端加齿套固定 Gear sleeve in pin&hole terminal
● 锁紧方式 Lock mode: 板对板 Board to Board
● 塑料外壳，键位防呆 Plastic shell, Fool-proofing design
性能参数 Specification
● 芯数 Pins: 12
● 额定电流 Current Rating: 230A (UL)、200A (CUL)
● 额定电压 Voltage Rating: 600V
● 绝缘电阻 Insulation Resistance: ≥3000MΩ
● 耐电压 Dielectric Withstanding Voltage: 2500V AC
● 工作温度 Temperature Range: -55℃ ~ +125℃
● 防护等级 IP Code: IP20
● 机械寿命 Mechanical Life: 500次

141067-JL-P12P 插头



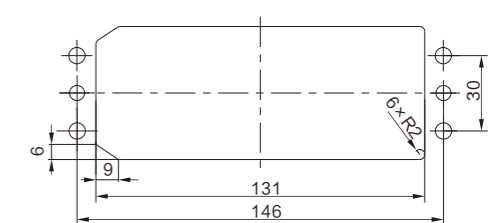
141067-JL-S12R 插座



141067-JL-P12P 插头开孔尺寸



141067-JL-S12R 插座开孔尺寸



141067 13芯电连接器

141067 13-Pin CONNECTOR INTRODUCTION

应用范围 Application

- 通信设备、充电设备以及储能设备等电源模块的功率、信号传输。
- Power and signal transmission of power modules such as communication equipment, charging equipment and energy storage equipment.

产品描述 Description

- 针端、孔端加齿套固定 Gear sleeve in pin terminal and hole terminal
- 锁紧方式 Lock mode: 板对板 Board to Board
- 塑料外壳, 键位防呆 Plastic shell, Fool-proofing design

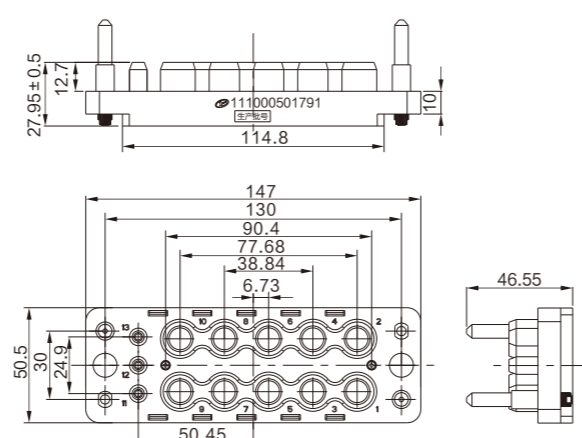
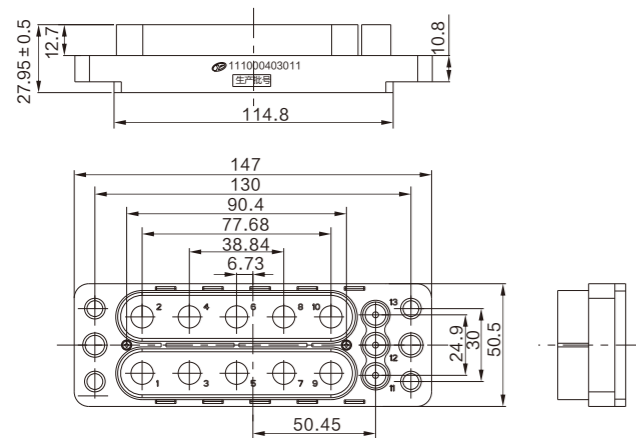
性能参数 Specification

- 芯数 Pins: 3+10
- 额定电流 Current Rating:
- 大功率接触件 high-power contacts (3AWG): 150A(UL)、125A(CUL)
- 小功率接触件 low-power contacts(10AWG): 35A(UL)、20(CUL)
- 额定电压 Voltage Rating: 600VAC/DC
- 绝缘电阻 Insulation Resistance: $\geq 500M\Omega$
- 耐电压 Dielectric Withstanding Voltage: 1500V AC
- 工作温度 Temperature Range: $-55^{\circ}\text{C} \sim +125^{\circ}\text{C}$
- 防护等级 IP Codes: IP20
- 机械寿命 Mechanical Life: 500次



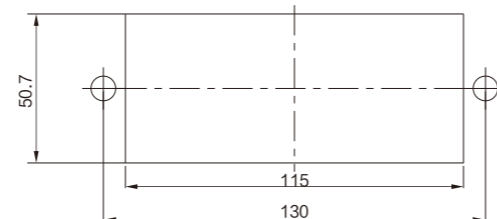
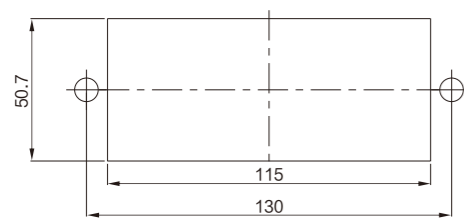
141067-JL-P(3+10)P插头

141067-JL-S(3+10)R插座



141067-JL-P(3+10)P插头开孔尺寸

141067-JL-S(3+10)R插座开孔尺寸



141067 14芯电连接器

141067 14-Pin CONNECTOR INTRODUCTION

应用范围 Application

- 通信设备、充电设备以及储能设备等电源模块的功率、信号传输。
- Power and signal transmission of power modules such as communication equipment, charging equipment and energy storage equipment.

产品描述 Description

- 针端、孔端加齿套固定 Gear sleeve in pin&hole terminal
- 锁紧方式 Lock mode: 板对板 Board to Board
- 塑料外壳, 键位防呆 Plastic shell, Fool-proofing design

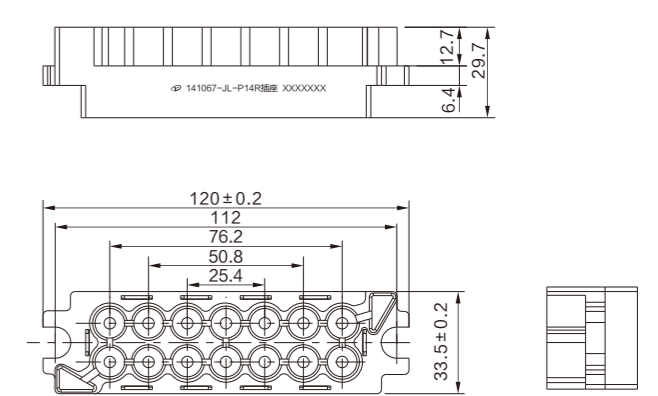
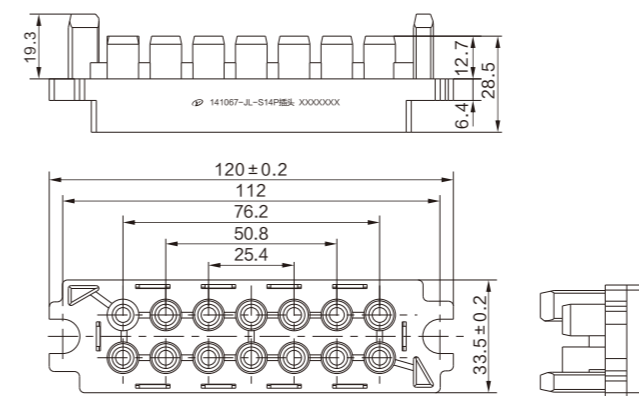
性能参数 Specification

- 芯数 Pins: 14
- 额定电流 Current Rating: 75A
- 额定电压 Voltage Rating: 1000V
- 绝缘电阻 Insulation Resistance: $\geq 500M\Omega$
- 耐电压 Dielectric Withstanding Voltage: 2500V AC
- 工作温度 Temperature Range: $-45^{\circ}\text{C} \sim +125^{\circ}\text{C}$
- 防护等级 IP Code: IP20
- 机械寿命 Mechanical Life: 500次



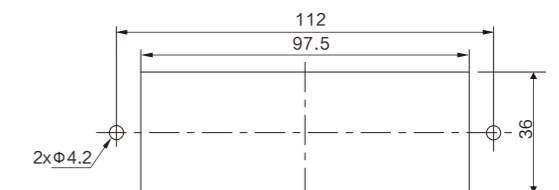
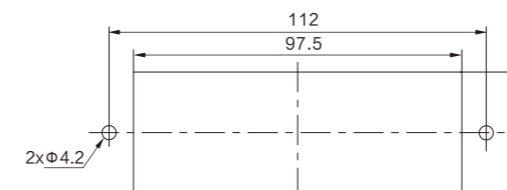
141067-JL-S14P插头

141067-JL-S14R插座



141067-JL-S14P插头开孔尺寸

141067-JL-S14R插座开孔尺寸



141067 37芯电连接器

141067 37-Pin CONNECTOR INTRODUCTION

141067 52芯电连接器

141067 52-Pin CONNECTOR INTRODUCTION



应用范围 Application
● 通信设备、充电设备以及储能设备等电源模块的功率、信号传输。
● Power and signal transmission of power modules such as communication equipment, charging equipment and energy storage equipment.
产品描述 Description
● 针端、孔端加齿套固定 Gear sleeve in pin terminal and hole terminal
● 锁紧方式 Lock mode: 板对板 Board to Board
● 塑料外壳, 键位防呆 Plastic shell, Fool-proofing design
性能参数 Specification
● 芯数 Pins: 37
● 额定电流 Current Rating: 0#/150A、12#/35A、16#/15A、20#/5A
● 额定电压 Voltage Rating: 0#/600V AC、12#/600V AC、16#/250V AC、20#/120V AC
● 绝缘电阻 Insulation Resistance: $\geq 500M\Omega$
● 耐电压 Dielectric Withstanding Voltage: 0#/3000V、12#/1500V、16#/1000V、20#/1000V
● 工作温度 Temperature Range: $-55^{\circ}\text{C} \sim +125^{\circ}\text{C}$
● 防护等级 IP Code: IP20
● 机械寿命 Mechanical Life: 500次

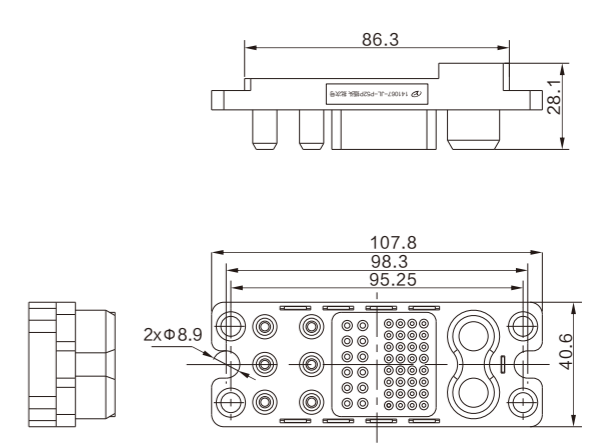
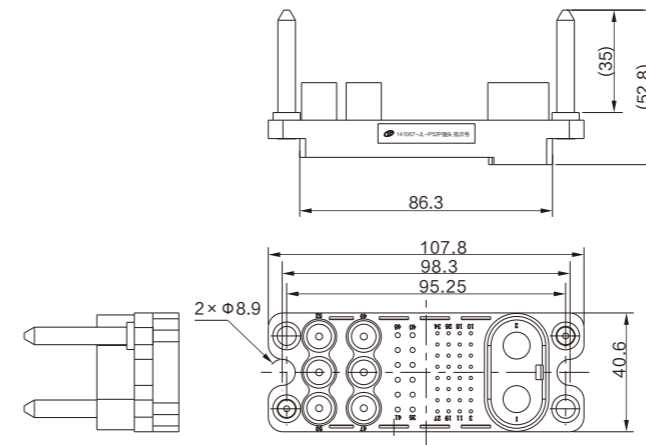
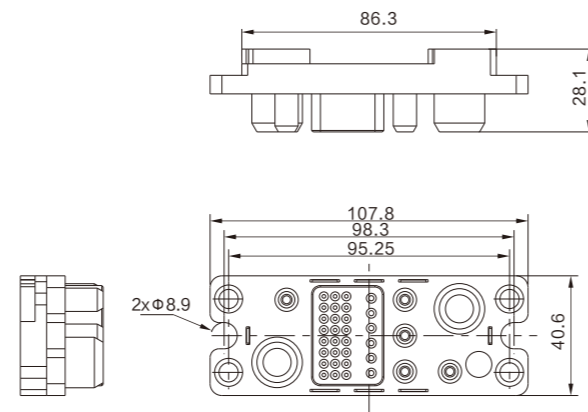
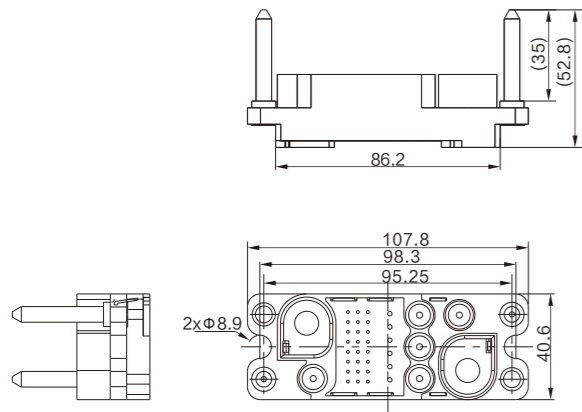
应用范围 Application
● 通信设备、充电设备以及储能设备等电源模块的功率、信号传输。
● Power and signal transmission of power modules such as communication equipment, charging equipment and energy storage equipment.
产品描述 Description
● 针端、孔端加齿套固定 Gear sleeve in pin terminal and hole terminal
● 锁紧方式 Lock mode: 板对板 Board to Board
● 塑料外壳, 键位防呆 Plastic shell, Fool-proofing design
性能参数 Specification
● 芯数 Pins: 52
● 额定电流 Current Rating: 0#/150A、12#/35A、16#/15A、20#/5A
● 额定电压 Voltage Rating: 0#/600V AC、12#/600V AC、16#/250V AC、20#/120V AC
● 绝缘电阻 Insulation Resistance: $\geq 500M\Omega$
● 耐电压 Dielectric Withstanding Voltage: 0#/3000V、12#/1500V、16#/1000V、20#/1000V
● 工作温度 Temperature Range: $-55^{\circ}\text{C} \sim +125^{\circ}\text{C}$
● 防护等级 IP Code: IP20
● 机械寿命 Mechanical Life: 500次

141067-JL-S37P插头

141067-JL-S37R插座

141067-JL-P52P插头

141067-JL-P52R插座

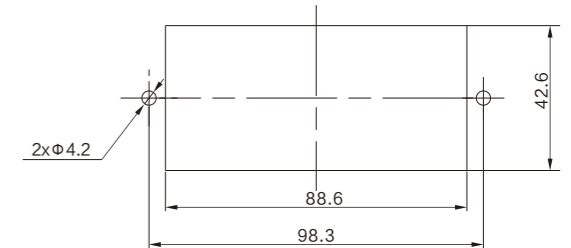
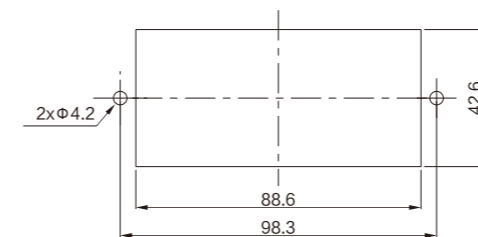
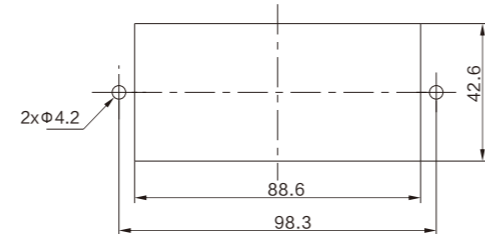
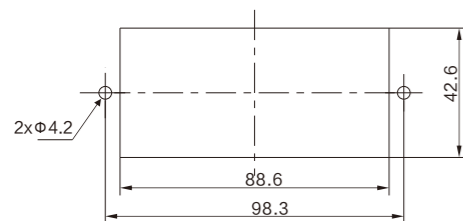


141067-JL-S37P插头开孔尺寸

141067-JL-S37R插座开孔尺寸

141067-JL-P52P插头开孔尺寸

141067-JL-P52R插座开孔尺寸



YGC1144电连接器

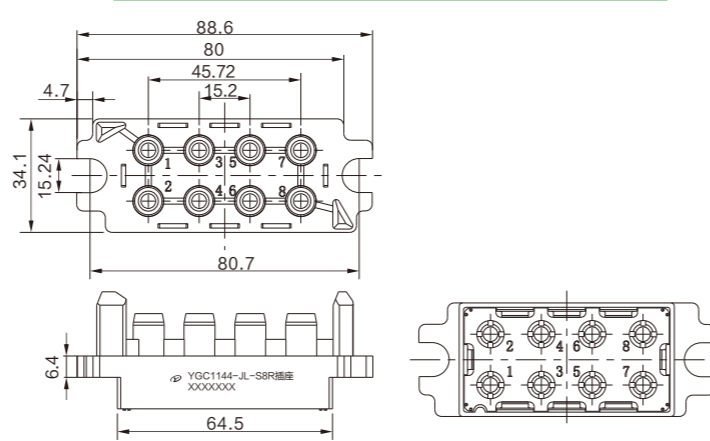
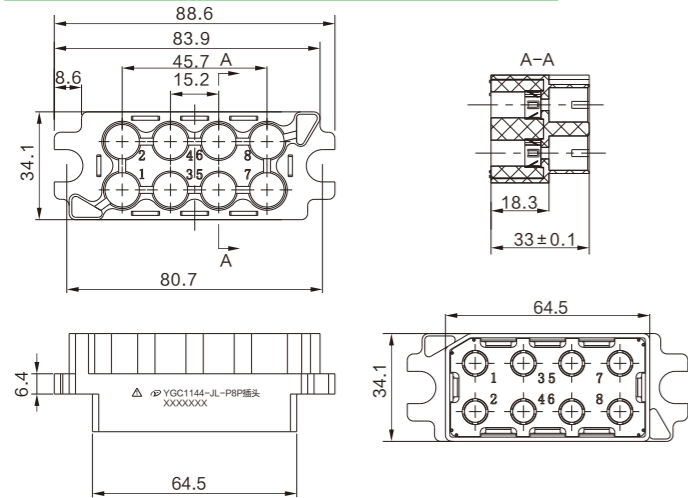
YGC1144 CONNECTOR INTRODUCTION



应用范围 Application
● 通信设备、充电设备以及储能设备等电源模块的功率、信号传输。
● Power and signal transmission of power modules such as communication equipment, charging equipment and energy storage equipment.
产品描述 Description
● 端接方式: 针端、孔端加齿套固定 Gear sleeve fixing in pin terminal and hole terminal.
● 锁紧方式: 铜排锁紧 Locking Mode: Copper bar locking
● 塑料外壳, 防错插 Plastic shell, Fool-proofing design
性能参数 Specification
● 芯数 Pins: 8
● 额定电流 Current Rating: 60A
● 额定电压 Voltage Rating: 1000V DC 50Hz
● 绝缘电阻 Insulation Resistance: $\geq 500M\Omega$
● 耐电压 Dielectric Withstanding Voltage: $\geq 2500V AC$
● 工作温度 Temperature Range: $-55^{\circ}C + 125^{\circ}C$
● 防护等级 IP Code: IP20
● 机械寿命 Mechanical Life: 500次

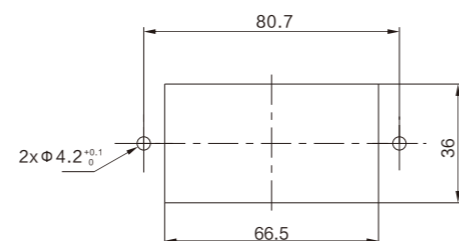
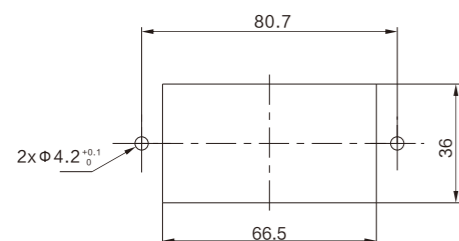
YGC1144-P8P插头

YGC1144-S8R插座



YGC1144-P8P插头开孔尺寸

YGC1144-S8R插座开孔尺寸



YGC565-03电连接器

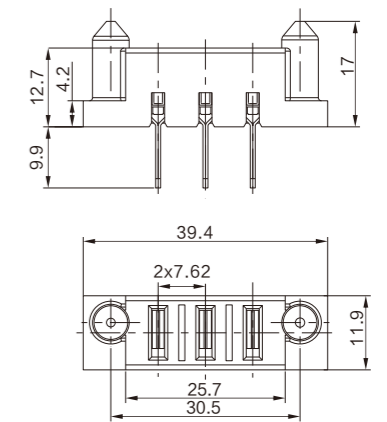
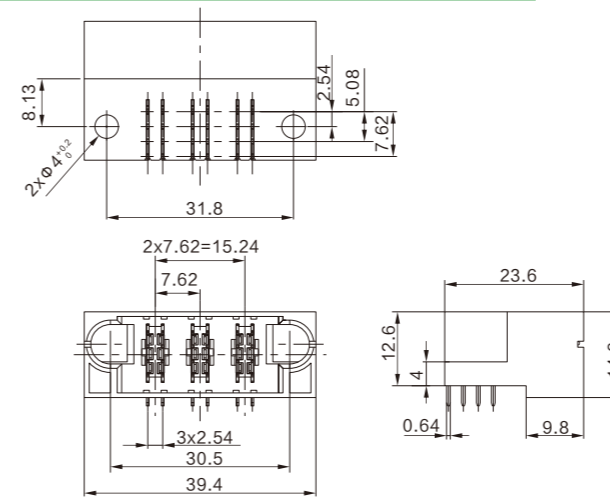
YGC565-03 CONNECTOR INTRODUCTION



应用范围 Application
● 该产品应用在通信设备、充电设备以及储能设备等电源模块的功率、信号传输。
● The connector is used in the power and signal transmission of power modules such as communication equipment, charging equipment and energy storage equipment.
产品描述 Description
● 端接方式 Termination Methods: PCB(焊板 welding plate)
● 锁紧方式 Lock function: 板对板 Board to Board
● 塑料外壳, 防错插 Plastic shell, fool-proofing design
性能参数 Specification
● 芯数 Pins: 3
● 额定电流 Rated current: 30 A
● 额定电压 Rated voltage: 130V AC
● 绝缘电阻 Insulation resistance: $\geq 1000M\Omega$
● 耐电压 Dielectric Withstanding Voltage: 2500V AC
● 工作温度 Temperature Range: $-55^{\circ}C \sim +125^{\circ}C$
● 防护等级 IP Code: IP20
● 机械寿命 Mechanical life: 200次

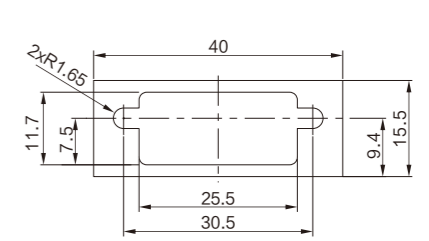
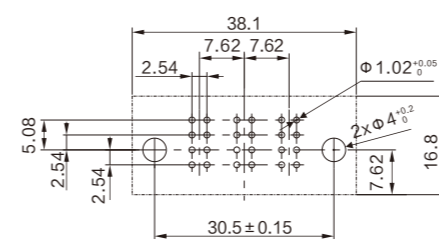
YGC565-M0000003RS01电源插头

YGC565-F0000003VC01电源插座



YGC565-M0000003RS01电源插头开孔尺寸

YGC565-F0000003VC01电源插座开孔尺寸



YGC565-0516电连接器

YGC565-0516 CONNECTOR INTRODUCTION



应用范围 Application
<ul style="list-style-type: none"> ● 通信设备、充电设备以及储能设备等电源模块的功率、信号传输。 ● Power and signal transmission of power modules such as communication equipment, charging equipment and energy storage equipment.
产品描述 Description
<ul style="list-style-type: none"> ● 端接方式 Termination Methods: PCB(焊板 welding plate) ● 锁紧方式 Lock function: 板对板 Board to Board ● 塑料外壳, 防错插 Plastic shell, fool-proofing design
性能参数 Specification
<ul style="list-style-type: none"> ● 芯数 Pins: 5+16 ● 额定电流 Rated current: 30A/1.5A ● 额定电压 rated voltage: 130V/50V ● 绝缘电阻 insulation resistance: $\geq 500M\Omega/1000M\Omega$ ● 耐压电压 Dielectric Withstanding Voltage: 250V/7500V AC ● 工作温度 Temperature Range: $-55^{\circ}\text{C} \sim +125^{\circ}\text{C}$ ● 防护等级 IP Code: IP20 ● 机械寿命 Mechanical life: 200 次

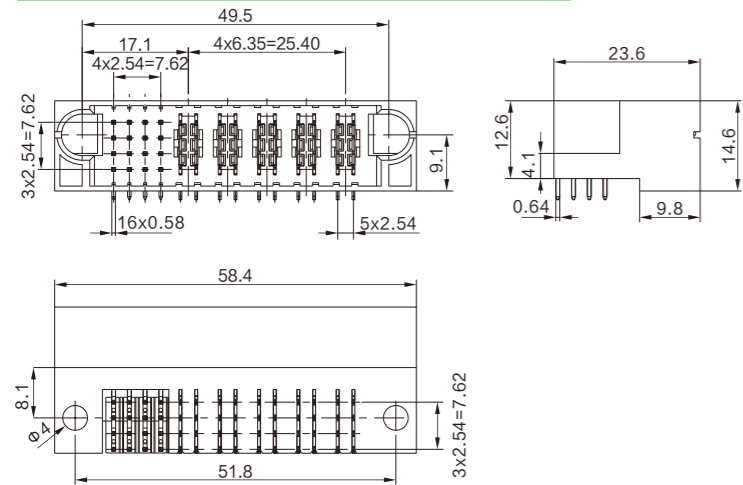
YGC565-0844电连接器

YGC565-0844 CONNECTOR INTRODUCTION

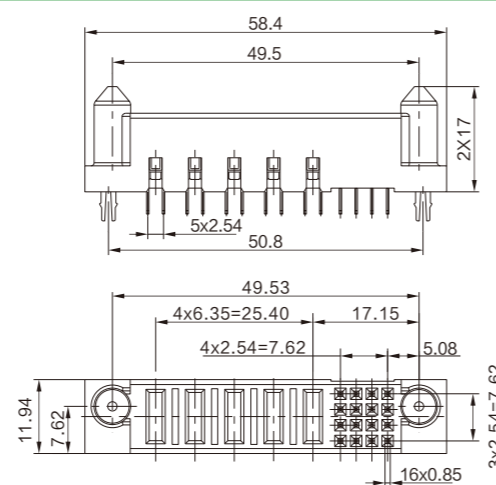


应用范围 Application
<ul style="list-style-type: none"> ● 通信设备、充电设备以及储能设备等电源模块的功率、信号传输。 ● Power and signal transmission of power modules such as communication equipment, charging equipment and energy storage equipment.
产品描述 Description
<ul style="list-style-type: none"> ● 端接方式 Termination Methods: PCB(焊板 welding plate) ● 锁紧方式 Lock function: 板对板 Board to Board ● 塑料外壳, 防错插 Plastic shell, fool-proofing design
性能参数 Specification
<ul style="list-style-type: none"> ● 芯数 Pins: 8+44 ● 额定电流 Current Rating: 30A/1.5A ● 额定电压 Voltage Rating: 130V/50V ● 绝缘电阻 Insulation Resistance: $\geq 500M\Omega/1000M\Omega$ ● 工作温度 Temperature Range: $-55^{\circ}\text{C} \sim +125^{\circ}\text{C}$ ● 防护等级 IP Code: IP20 ● 机械寿命 Mechanical Life: 200 次

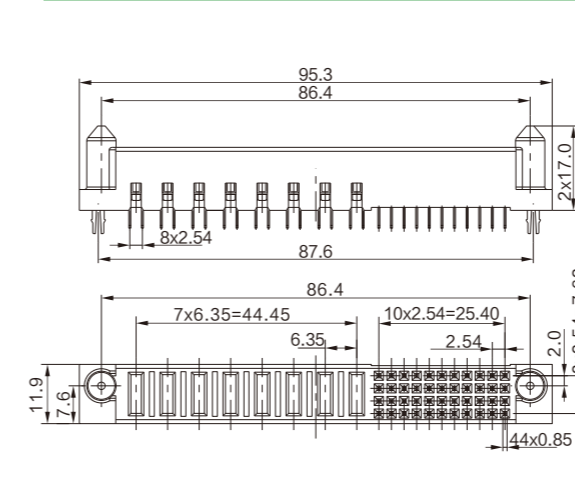
YGC565-M0001605RS01混装插头



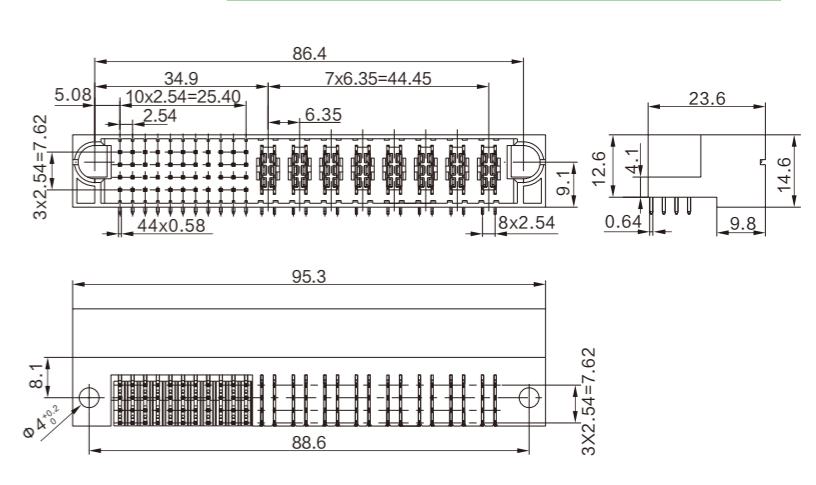
YGC565-F0001605VS01混装插座



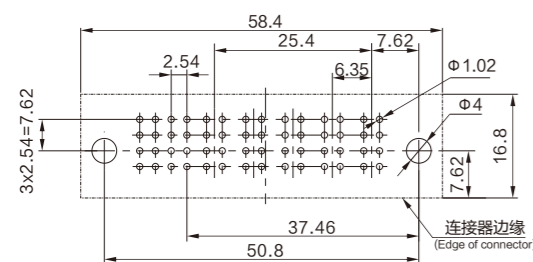
YGC565-F0004408VS01混装插座



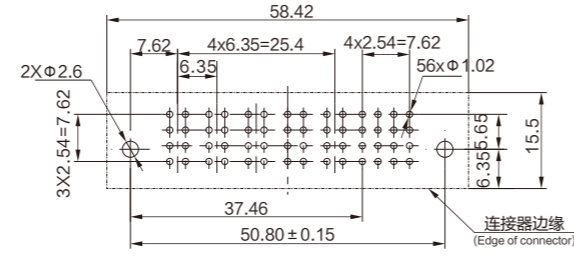
YGC565-M0004408RS01混装插头



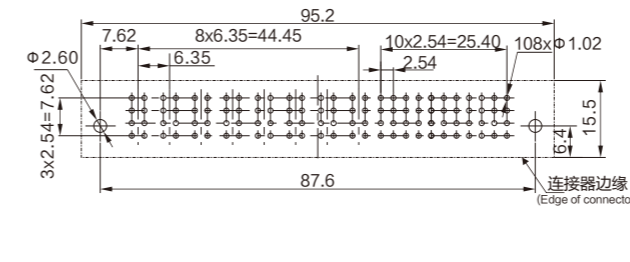
YGC565-M0001605RS01混装插头开孔尺寸



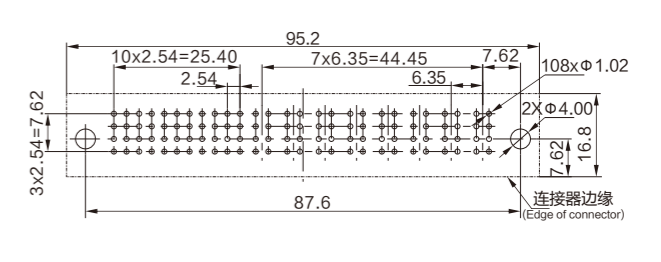
YGC565-F0001605VS01混装插座开孔尺寸



YGC565-F0004408VS01混装插座开孔尺寸

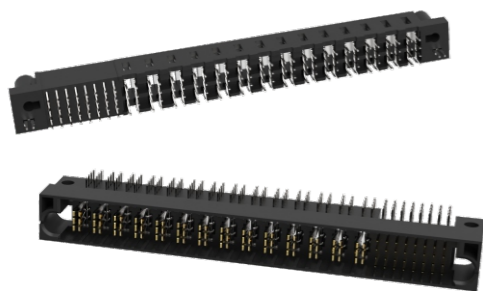


YGC565-M0004408RS01混装插头开孔尺寸



YGC565-3214电连接器

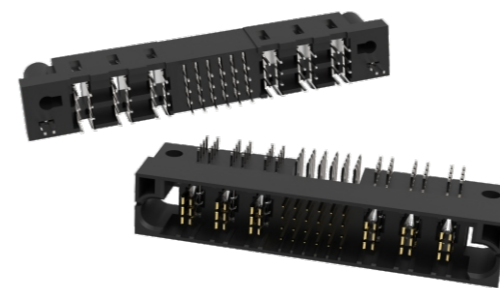
YGC565-3214 CONNECTOR INTRODUCTION



应用范围 Application
● 通信设备、充电设备以及储能设备等电源模块的功率、信号传输。
● Power and signal transmission of power modules such as communication equipment, charging equipment and energy storage equipment.
产品描述 Description
● 端接方式 Termination Methods: PCB(焊板 welding plate)
● 锁紧方式 Lock function: 板对板 Board to Board
● 塑料外壳, 防错插 Plastic shell, fool-proofing design
性能参数 Specification
● 芯数 Pins: 14+32
● 额定电流 Current Rating: 30A/1.5A
● 额定电压 Voltage Rating: 130V/50V
● 绝缘电阻 Insulation Resistance: 500MΩ/1000MΩ
● 耐电压 Dielectric Withstanding Voltage: 2500V/750V AC
● 工作温度 Temperature Range: -55℃ ~ +125℃
● 防护等级 IP Code: IP20
● 机械寿命 Mechanical Life: 200次

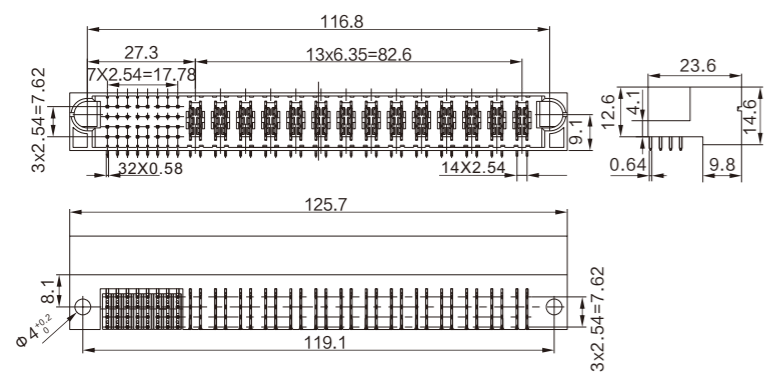
YGC565-032403电连接器

YGC565-032403 CONNECTOR INTRODUCTION

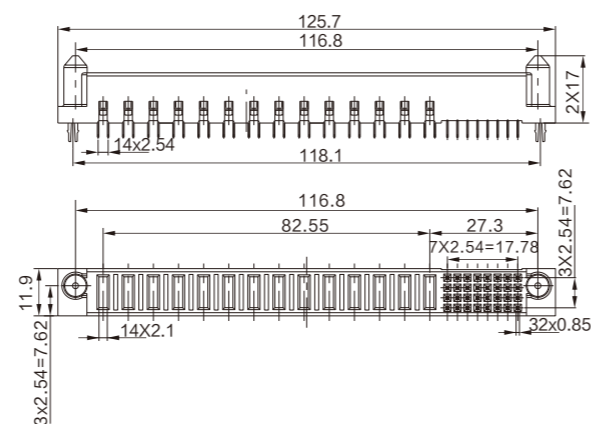


应用范围 Application
● 通信设备、充电设备以及储能设备等电源模块的功率、信号传输。
● Power and signal transmission of power modules such as communication equipment, charging equipment and energy storage equipment.
产品描述 Description
● 端接方式 Termination Methods: PCB(焊板 welding plate)
● 锁紧方式 Lock function: 板对板 Board to Board
● 塑料外壳, 防错插 Plastic shell, fool-proofing design
性能参数 Specification
● 芯数 Pins: 3+24+3
● 额定电流 Current Rating: 30A/1.5A
● 额定电压 Voltage Rating: 130V/50V
● 绝缘电阻 Insulation Resistance: ≥500MΩ/1000MΩ
● 耐电压 Dielectric Withstanding Voltage: 2500V/750V AC
● 工作温度 Temperature Range: -55℃ ~ +125℃
● 防护等级 IP Code: IP20
● 机械寿命 Mechanical Life: 200次

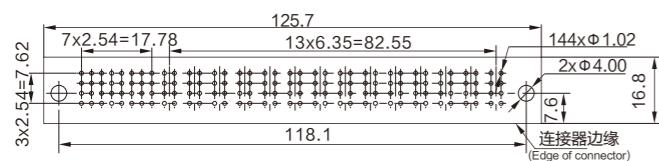
YGC565-M0003214RS01混装插头



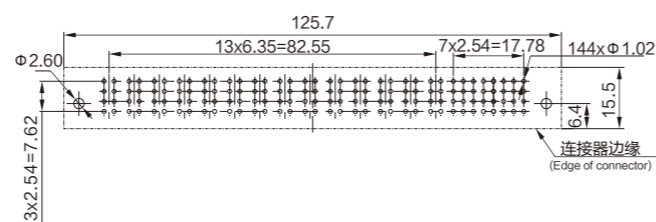
YGC565-F0003214VS01混装插座



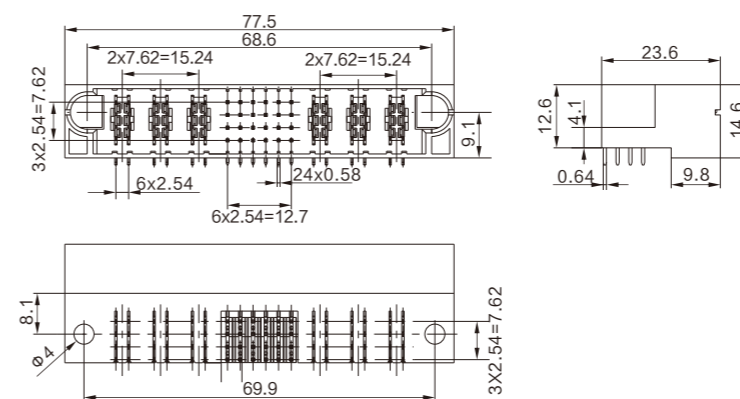
YGC565-M0003214RS01混装插头开孔尺寸



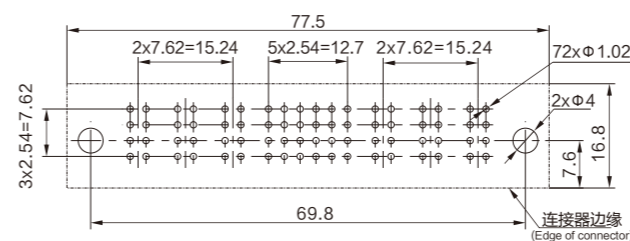
YGC565-F0003214VS01混装插座开孔尺寸



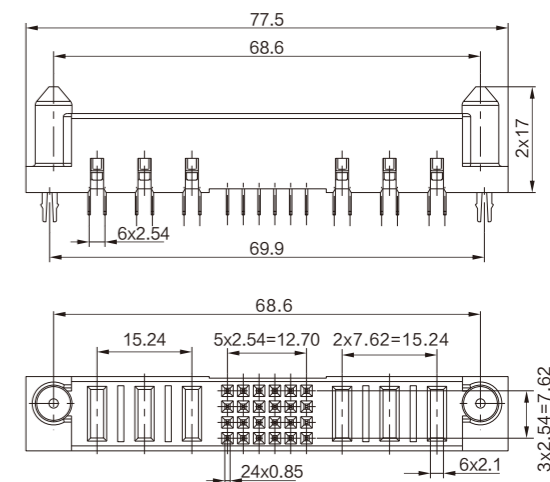
YGC565-M0302403RS01混装插头



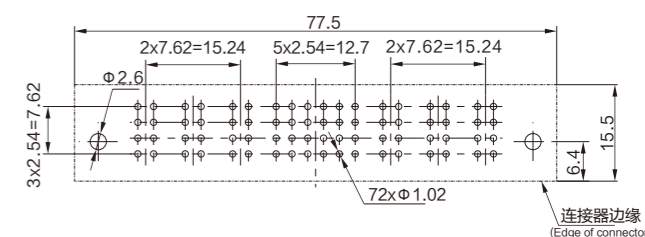
YGC565-M0302403RS01混装插头开孔尺寸



YGC565-F0302403VS01混装插座



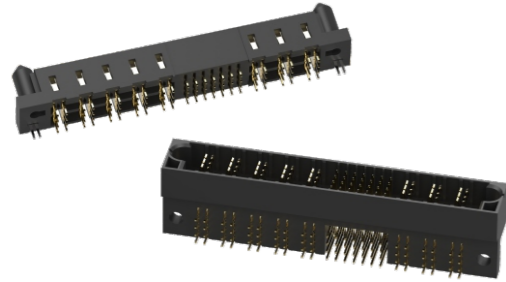
YGC565-F0302403VS01混装插座开孔尺寸



YGC565-032805电连接器

YGC565-032805 CONNECTOR INTRODUCTION

应用范围 Application
● 通信设备、充电设备以及储能设备等电源模块的功率、信号传输。
● Power and signal transmission of power modules such as communication equipment, charging equipment and energy storage equipment.
产品描述 Description
● 端接方式 Termination Methods: PCB(焊板 welding plate)
● 锁紧方式 Lock function: 板对板 Board to Board
● 塑料外壳, 防错插 Plastic shell, fool-proofing design
性能参数 Specification
● 芯数 Pins: 3+28+5
● 额定电流 Current Rating: 30A/1.5A
● 额定电压 Voltage Rating: 130V/50V
● 绝缘电阻 Insulation Resistance: $\geq 500M\Omega/1000M\Omega$
● 耐电压 Dielectric Withstanding Voltage: 2500V/750V AC
● 工作温度 Temperature Range: $-55^{\circ}C \sim +125^{\circ}C$
● 防护等级 IP Code: IP20
● 机械寿命 Mechanical Life: 200 次



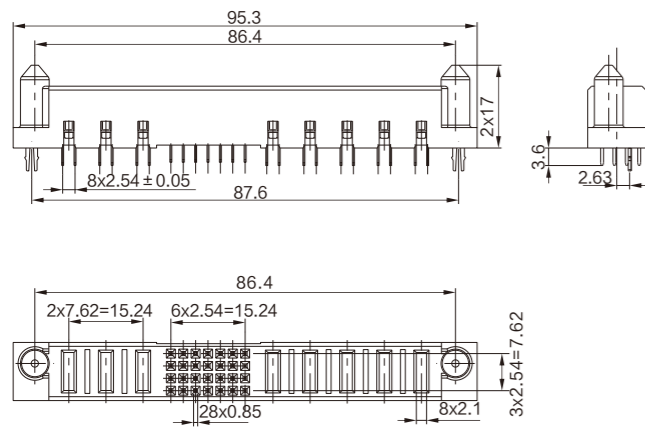
YGC565-041602电连接器

YGC565-041602 CONNECTOR INTRODUCTION

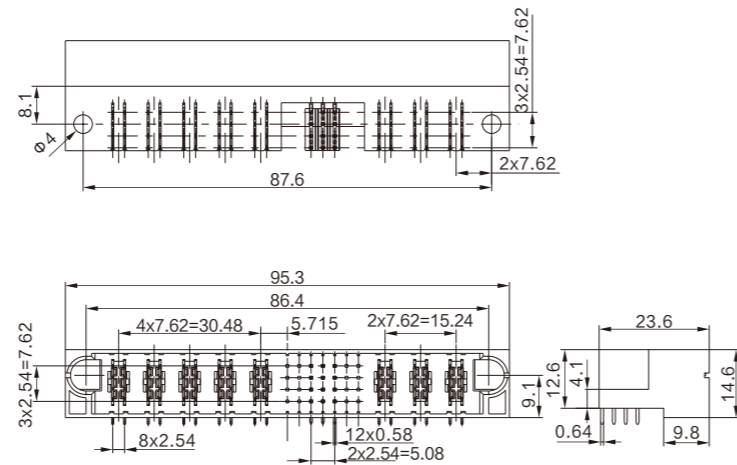
应用范围 Application
● 通信设备、充电设备以及储能设备等电源模块的功率、信号传输。
● Power and signal transmission of power modules such as communication equipment, charging equipment and energy storage equipment.
产品描述 Description
● 端接方式 Termination Methods: PCB(焊板 welding plate)
● 锁紧方式 Lock function: 板对板 Board to Board
● 塑料外壳, 防错插 Plastic shell, fool-proofing design
性能参数 Specification
● 芯数 Pins: 3+28+5
● 额定电流 Current Rating: 30A/1.5A
● 额定电压 Voltage Rating: 130V/50V
● 绝缘电阻 Insulation Resistance: $\geq 500M\Omega/1000M\Omega$
● 耐电压 Dielectric Withstanding Voltage: 2500V/750V AC
● 工作温度 Temperature Range: $-55^{\circ}C \sim +125^{\circ}C$
● 防护等级 IP Code: IP20
● 机械寿命 Mechanical Life: 200 次



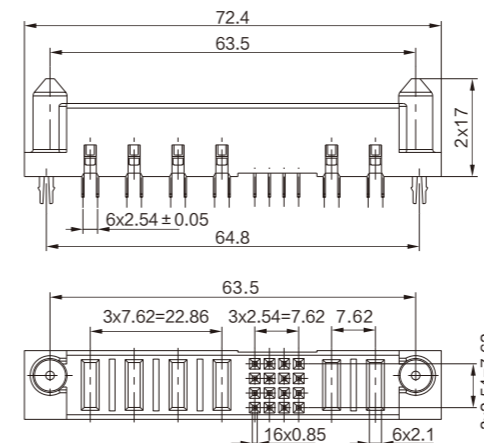
YGC565-F0302805VS01混装插座



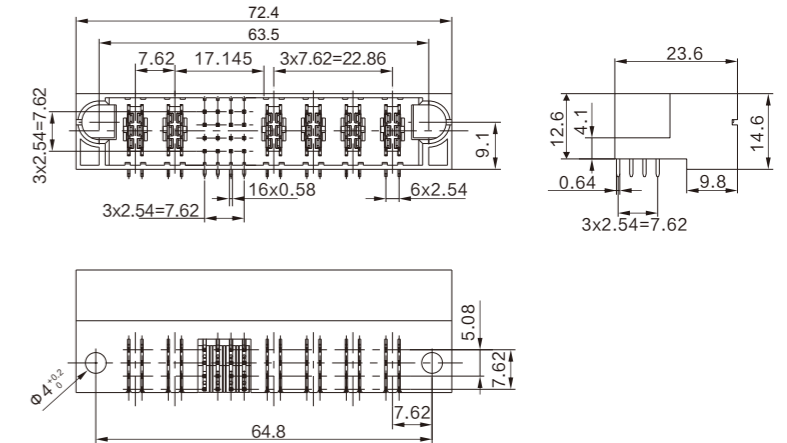
YGC565-M0501203RS01混装插头



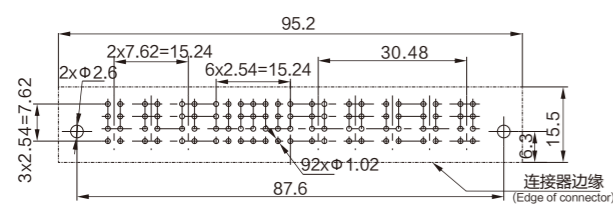
YGC565-F0401602VS01混装插座



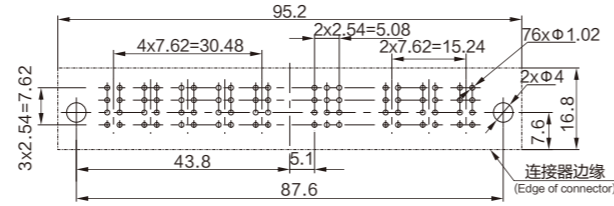
YGC565-M0201604RS01混装插头



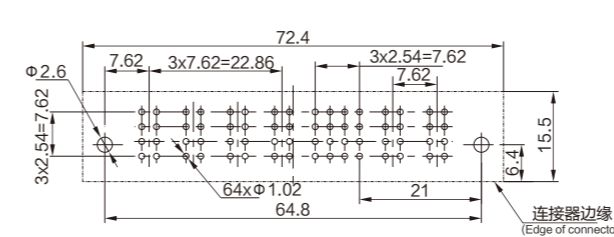
YGC565-F0302805VS01混装插座开孔尺寸



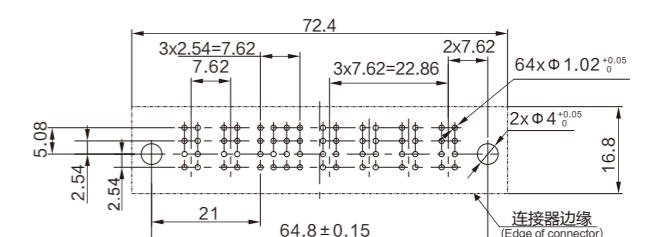
YGC565-M0501203RS01混装插头开孔尺寸



YGC565-F0401602VS01混装插座开孔尺寸



YGC565-M0201604RS01混装插头开孔尺寸



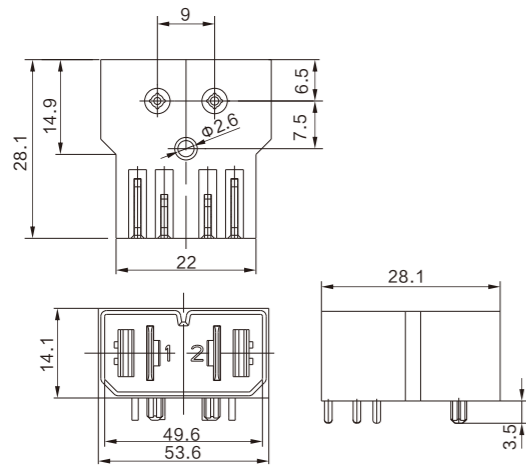
141082电连接器

141082 CONNECTOR INTRODUCTION

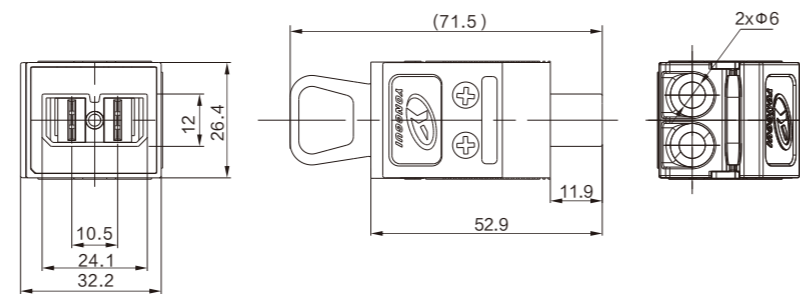


应用范围 Application
<ul style="list-style-type: none"> ● 电源类控制箱、网络电源输出设备的电气连接。 ● Electrical connection of source control cabinet、internet power output device .
产品描述 Description
<ul style="list-style-type: none"> ● 端接方式 Termination Methods: 针端弯式焊板, 孔端螺钉压接 Bent plate connection in pin terminal, screw connection in hole terminal ● 锁紧方式 Lock mode: 线对板, 塑料挂扣, 快速插拔 Line to Board, plastic buckle, fast insertion and extraction; ● 线缆规格 Cable Specification: 12AWG-6AWG ● 塑料外壳, 防错插 Plastic shell, Fool-proofing design
性能参数 Specification
<ul style="list-style-type: none"> ● 芯数 Pins: 2 ● 额定电流 Current Rating: 63A ● 额定电压 Voltage Rating: 300V DC ● 绝缘电阻 Insulation Resistance: $\geq 5000M\Omega$ ● 耐电压 Dielectric Withstanding Voltage: 1500V AC ● 工作温度 Temperature Range: $-40^{\circ}\text{C} \sim +120^{\circ}\text{C}$ ● 防护等级 IP Code: IP20 ● 机械寿命 Mechanical Life: 200 次

141082-JL-P2R插座



141082-JL-S2P插头



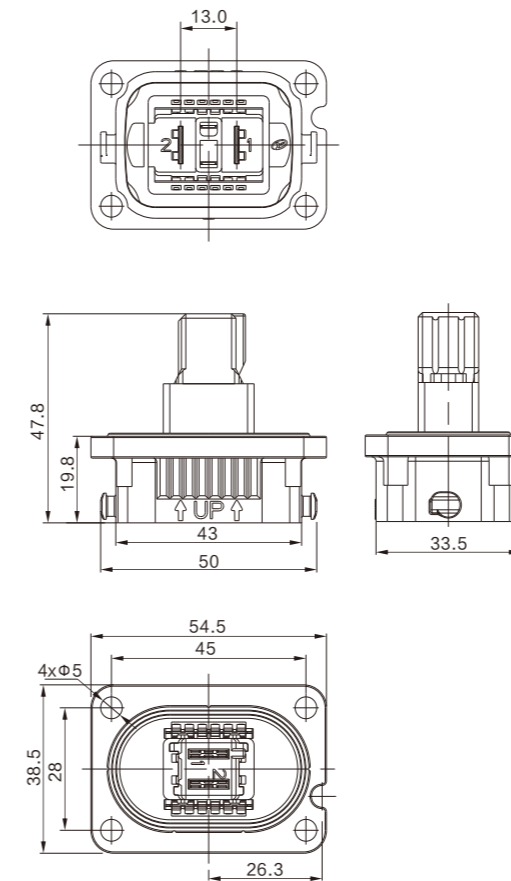
141088电连接器

141088 CONNECTOR INTRODUCTION

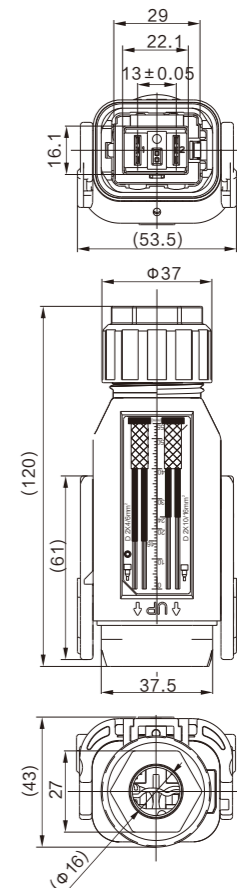


应用范围 Application
<ul style="list-style-type: none"> ● 通信5G基站户外RRU、AAU功率传输。 ● Outdoor RRU、AAU Power transmission of communication 5G base station
产品描述 Description
<ul style="list-style-type: none"> ● 耐紫外线 Ultraviolet radiation resistant: 1000H ● 端接方式 Termination Methods: 座端直插式, 孔端压接 Straight plug in , Crimping in hole terminal ● 锁紧方式 Lock mode: 把手连接, 快速插拔 Handle connection, fast insertion and extraction ● 塑料外壳, 防错插 Plastic shell, Fool-proofing design
性能参数 Specification
<ul style="list-style-type: none"> ● 芯数 Pins: 2 ● 额定电流 Current Rating: 50A ● 额定电压 Voltage Rating: 85V DC ● 绝缘电阻 Insulation Resistance: $\geq 3000M\Omega$ ● 耐电压 Dielectric Withstanding Voltage: 1500V AC ● 工作温度 Temperature Range: $-40^{\circ}\text{C} \sim +125^{\circ}\text{C}$ ● 防护等级 IP Code: IP67 ● 机械寿命 Mechanical Life: 50 次

141088-JL-P2R插座

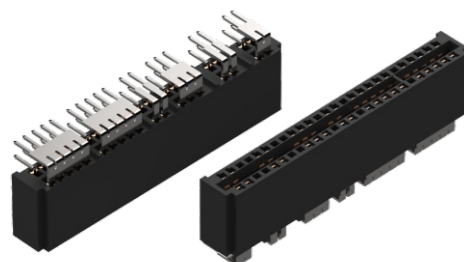


141088-JL-S2P插头



YGC562B电连接器

YGC562B CONNECTOR INTRODUCTION



应用范围 Application

- 通信设备、储能设备等电源模块功率、信号传输。
- Power and signal transmission of power modules such as communication equipment and energy storage equipment.

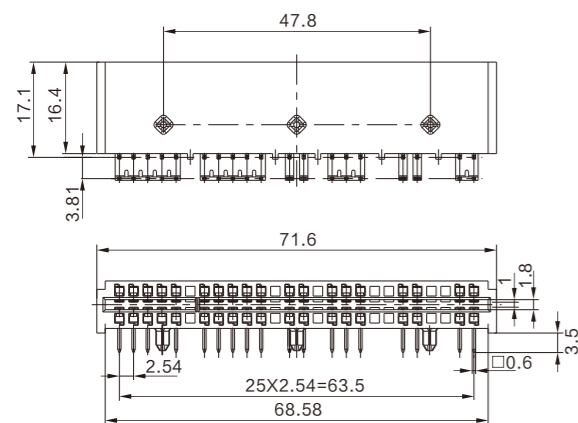
产品描述 Description:

- 端接方式 Termination Methods: PCB (焊接welding) & PCB (插接plug)
- 安装方式 Installation Methods: PCB (焊接welding)

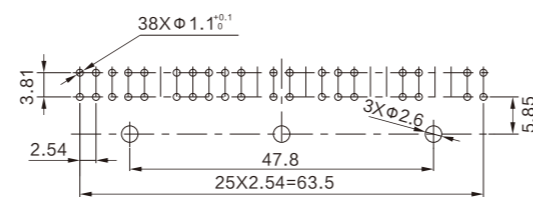
性能参数 Specification

- 芯数 Pins: 52max
- 额定电流 Current Rating: 50A/30A/20A/7A
- 额定电压 Voltage Rating: 300V
- 绝缘电阻 Insulation Resistance: $\geq 1000M\Omega$
- 耐电压 Dielectric Withstanding Voltage: 1000V AC
- 工作温度 Temperature Range: $-55^{\circ}C \sim +125^{\circ}C$
- 机械寿命 Mechanical Life: 50次

YGC562B-2.54-52(38)RSWJ-II插座



YGC562B-2.54-52(38)RSWJ-II插座开孔尺寸



YGC562D 直式电连接器

YGC562D CONNECTOR INTRODUCTION



应用范围 Application

- 通信设备、储能设备等电源模块功率、信号传输。
- Power and signal transmission of power modules such as communication equipment and energy storage equipment.

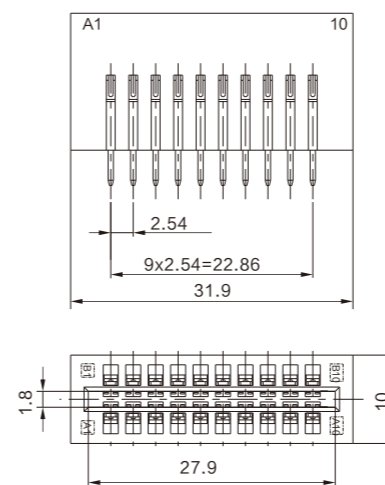
产品描述 Description:

- 端接方式 Termination Methods: 直式板接 Straight plate connection
- 安装方式 Installation Methods: PCB (焊接welding)

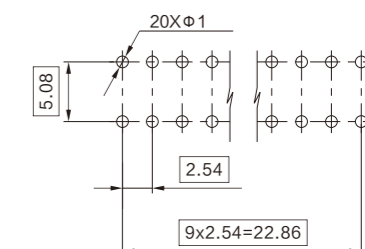
性能参数 Specification

- 芯数 Pins: 20
- 额定电流 Current Rating: 3A
- 额定电压 Voltage Rating: 300V
- 绝缘电阻 Insulation Resistance: $\geq 1000M\Omega$ at DC500V
- 耐电压 Dielectric Withstanding Voltage: 1000V AC
- 工作温度 Temperature Range: $-55^{\circ}C \sim +125^{\circ}C$
- 机械寿命 Mechanical Life: 50次

YGC562D-2.54-20RSBJ插座



YGC562D-2.54-20RSBJ插座开孔尺寸



YGC562D 电连接器(直式)

YGC562D CONNECTOR INTRODUCTION

应用范围 Application

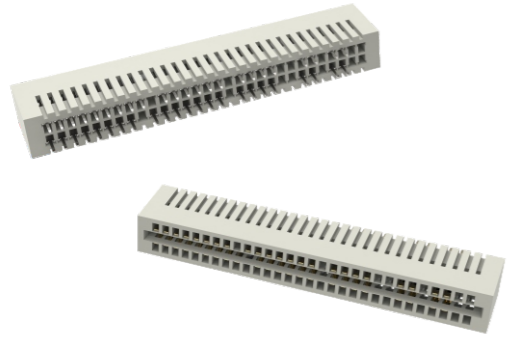
- 通信设备、储能设备等电源模块功率、信号传输。
- Power and signal transmission of power modules such as communication equipment and energy storage equipment.

产品描述 Description

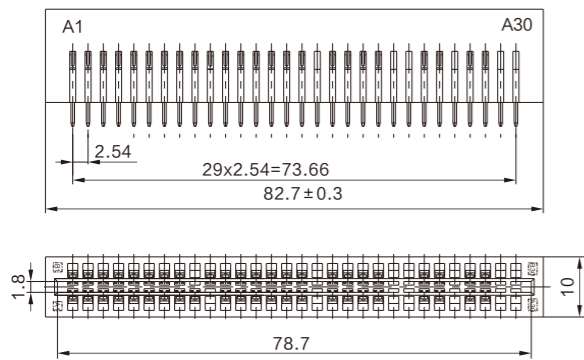
- 端接方式 Termination Methods: PCB (焊接welding) &PCB (插接plug)
- 安装方式 Installation Methods: PCB (焊接welding)

性能参数 Specification

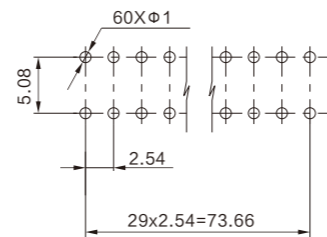
- 芯数 Pins: 20、30、32、40、44、50、60max
- 额定电流 Current Rating: 3A/Pin
- 额定电压 Voltage Rating: 300V
- 绝缘电阻 Insulation Resistance: $\geq 1000M\Omega$
- 耐电压 Dielectric Withstanding Voltage: 1000V AC
- 工作温度 Temperature Range: $-55^{\circ}\text{C} \sim +125^{\circ}\text{C}$
- 机械寿命 Mechanical Life: 50次



YGC562D-2.54-60(46)RSBJ插座



YGC562D-2.54-60(46)RSBJ插座开孔尺寸



YGC562D 电连接器(弯式)

YGC562D CONNECTOR INTRODUCTION

应用范围 Application

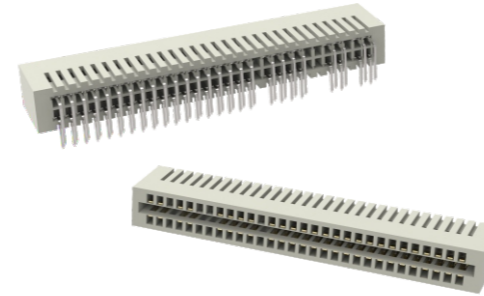
- 通信设备、储能设备等电源模块功率、信号传输。
- Power and signal transmission of power modules such as communication equipment and energy storage equipment.

产品描述 Description

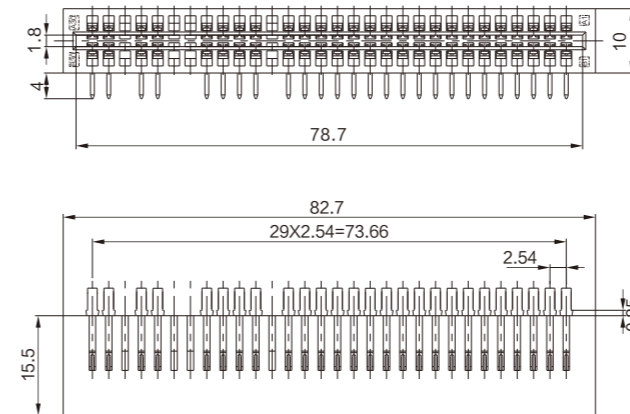
- 端接方式 Termination Methods: PCB (焊接welding) &PCB (插接plug)
- 安装方式 Installation Methods: PCB (焊接welding)

性能参数 Specification

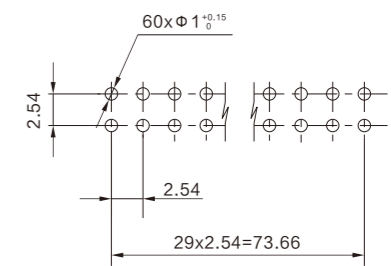
- 芯数 Pins: 20、30、32、40、44、50、60max
- 额定电流 Current Rating: 3A/Pin
- 额定电压 Voltage Rating: 300V
- 绝缘电阻 Insulation Resistance: $\geq 1000M\Omega$
- 耐电压 Dielectric Withstanding Voltage: 1000V AC
- 工作温度 Temperature Range: $-55^{\circ}\text{C} \sim +125^{\circ}\text{C}$
- 机械寿命 Mechanical Life: 50次



YGC562D-2.54-60(52)RSWJ插座



YGC562D-2.54-60(52)RSWJ插座开孔尺寸



YGC562E电连接器

YGC562E CONNECTOR INTRODUCTION

应用范围 Application

- 通信设备、储能设备等电源模块功率、信号传输。
- Power and signal transmission of power modules such as communication equipment and energy storage equipment.

产品描述 Description

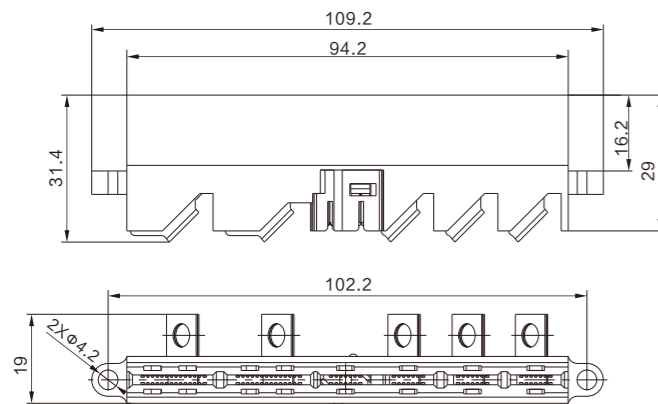
- 端接方式 Termination Methods: PCB (插接plug) & 导线连接 Wire connection
- 安装方式 Installation Methods: 螺钉锁紧 Screw locking

性能参数 Specification

- 额定电流 Current Rating: 70A/30A/5A
- 额定电压 Voltage Rating: 250V
- 绝缘电阻 Insulation Resistance: $\geq 500M\Omega$
- 耐电压 Dielectric Withstanding Voltage: 1500V/750V AC
- 工作温度 Temperature Range: $-55^{\circ}\text{C} \sim +125^{\circ}\text{C}$
- 机械寿命 Mechanical Life: 50次



YGC562E-6RWJ插座



YGC562G电连接器

YGC562G CONNECTOR INTRODUCTION

应用范围 Application

- 通信设备、储能设备等电源模块功率、信号传输。
- Power and signal transmission of power modules such as communication equipment and energy storage equipment.

产品描述 Description

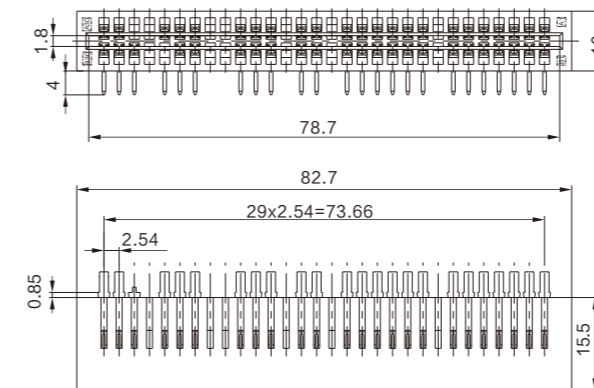
- 端接方式 Termination Methods: PCB (焊接welding) & PCB (插接plug)
- 安装方式 Installation Methods: PCB (焊接welding)

性能参数 Specification

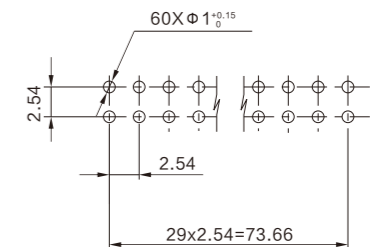
- 芯数 Pins: 32、50、60max
- 额定电流 Current Rating: 5A/Pin
- 额定电压 Voltage Rating: 300V
- 绝缘电阻 Insulation Resistance: $\geq 1000M\Omega$
- 耐电压 Dielectric Withstanding Voltage: 1000V AC
- 工作温度 Temperature Range: $-55^{\circ}\text{C} \sim +125^{\circ}\text{C}$
- 机械寿命 Mechanical Life: 50次



YGC562G-2.54-60(46)RSWJ-II 插座

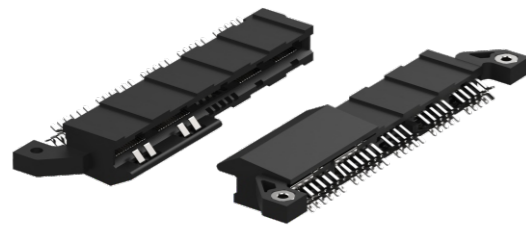


YGC562G-2.54-60(46)RSWJ-II 插座开孔尺寸



141050电连接器

141050 CONNECTOR INTRODUCTION



应用范围 Application

- 通信设备、储能设备等电源模块功率、信号传输。
- Power and signal transmission of power modules such as communication equipment and energy storage equipment.

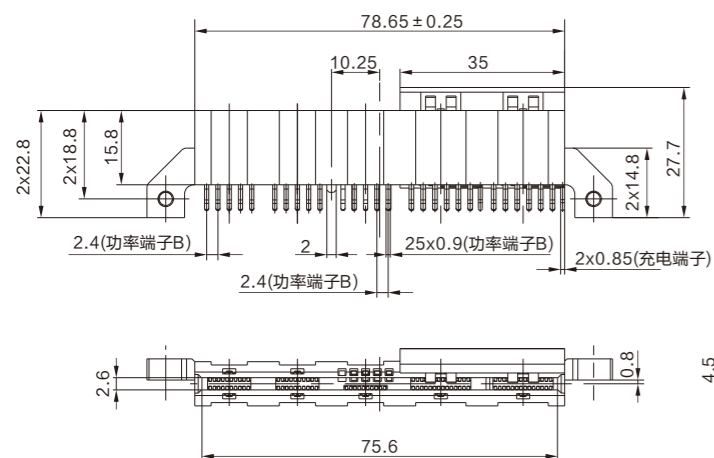
产品描述 Description

- 端接方式 Termination Methods: PCB (焊接welding) & PCB (插接plug)
- 安装方式 Installation Methods: 螺钉锁紧 Screw locking

性能参数 Specification

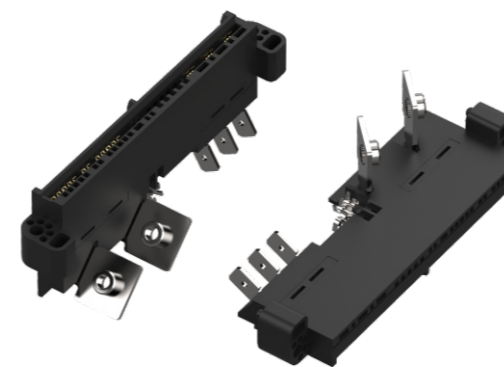
- 额定电流 Current Rating: 90A/30A/2A
- 额定电压 Voltage Rating: DC&信号 Signal: 80V/400V
- 绝缘电阻 Insulation Resistance: $\geq 500M\Omega$
- 工作温度 Temperature Range: $-55^{\circ}C \sim +125^{\circ}C$
- 机械寿命 Mechanical Life: 50次

141050-9RSBJ-SMT-1插座



141064A电连接器

141064A CONNECTOR INTRODUCTION



应用范围 Application

- 通信设备、储能设备等电源模块功率、信号传输。
- Power and signal transmission of power modules such as communication equipment and energy storage equipment.

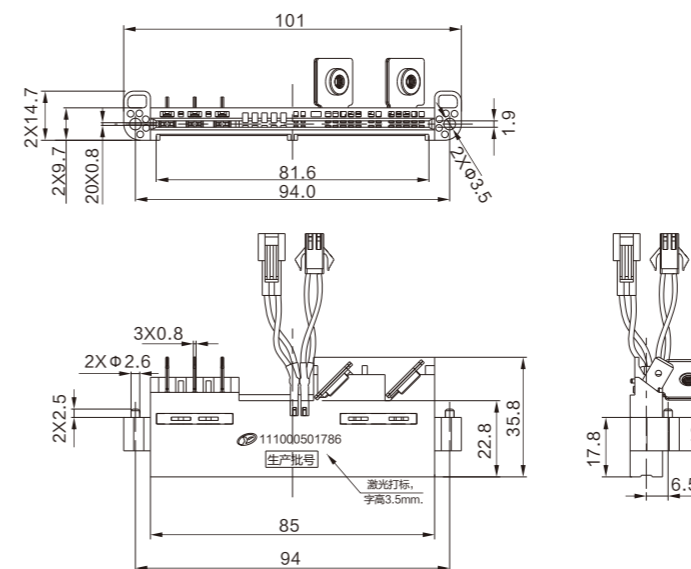
产品描述 Description

- 端接方式 Termination Methods: PCB (插接plug) & 导线连接 Wire connection
- 安装方式 Installation Methods: 螺钉锁紧 Screw locking

性能参数 Specification

- 额定电流 Current Rating: 85A/25A/3A
- 额定电压 Voltage Rating: 600V/60V
- 绝缘电阻 Insulation Resistance: $\geq 1000M\Omega$
- 耐压 Dielectric Withstanding Voltage: 2000V/500V AC
- 工作温度 Temperature Range: $-40^{\circ}C \sim +125^{\circ}C$
- 机械寿命 Mechanical Life: 50次

141064A-JL-S(2+3+4)R插座



141064C电连接器

141064C CONNECTOR INTRODUCTION

应用范围 Application

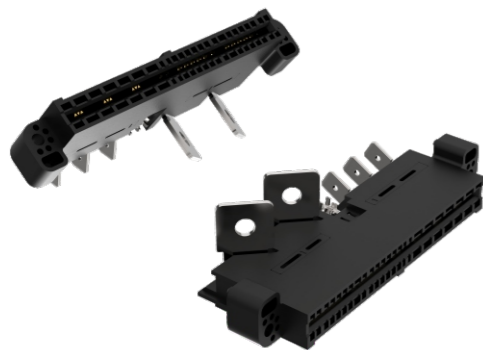
- 通信设备、储能设备等电源模块功率、信号传输。
- Power and signal transmission of power modules such as communication equipment and energy storage equipment.

产品描述 Description

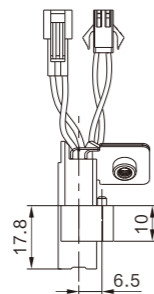
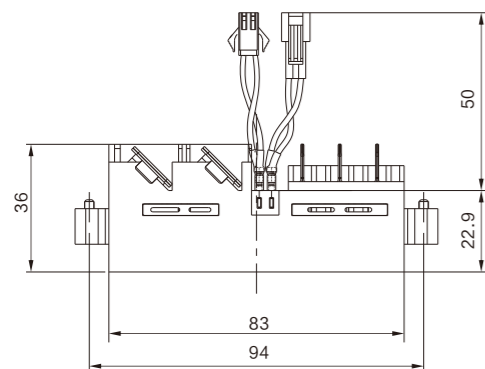
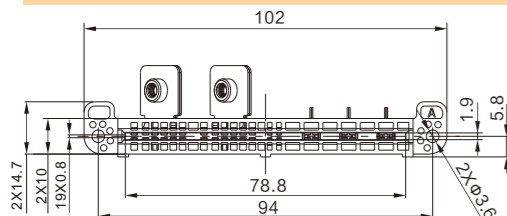
- 端接方式 Termination Methods: PCB (插接plug) & 导线连接 Wire connection
- 安装方式 Installation Methods: 螺钉锁紧 Screw locking

性能参数 Specification

- 额定电流 Current Rating: 85A/25A/3A
- 额定电压 Voltage Rating: 600V/60V
- 绝缘电阻 Insulation Resistance: $\geq 1000M\Omega$
- 耐电压 Dielectric Withstanding Voltage: 2000V/500V AC
- 工作温度 Temperature Range: $-40^{\circ}\text{C} \sim +125^{\circ}\text{C}$
- 机械寿命 Mechanical Life: 50次



141064C-JL-S(2+3+4)R插座



141064D电连接器

141064D CONNECTOR INTRODUCTION

应用范围 Application

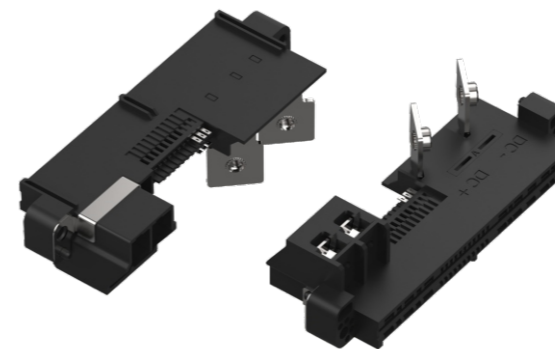
- 通信设备、储能设备等电源模块功率、信号传输。
- Power and signal transmission of power modules such as communication equipment and energy storage equipment.

产品描述 Description

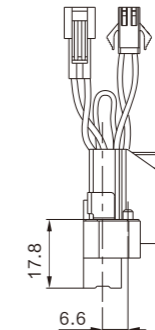
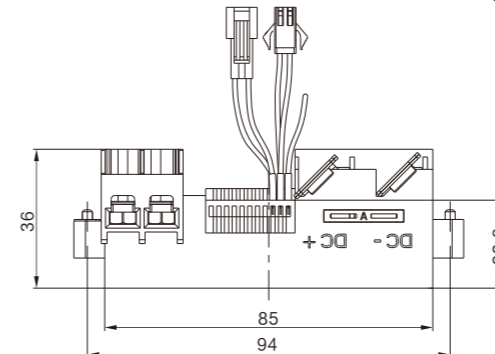
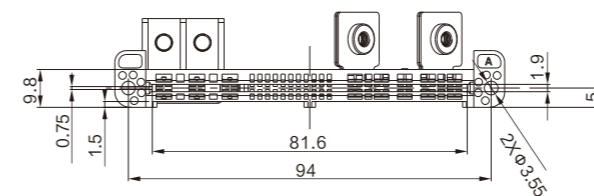
- 端接方式 Termination Methods: PCB (插接plug) & 导线连接 Wire connection
- 安装方式 Installation Methods: 螺钉锁紧 Screw locking

性能参数 Specification

- 额定电流 Current Rating: 100A/30A/1A
- 额定电压 Voltage Rating: 420V/72V
- 绝缘电阻 Insulation Resistance: $\geq 1000M\Omega$
- 耐电压 Dielectric Withstanding Voltage: 2000V/500V AC
- 工作温度 Temperature Range: $-40^{\circ}\text{C} \sim +125^{\circ}\text{C}$
- 机械寿命 Mechanical Life: 50次



141064D-JL-S(2+3+6)R插座



141064E电连接器

141064E CONNECTOR INTRODUCTION

应用范围 Application

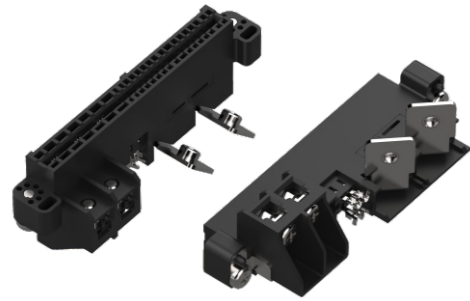
- 通信设备、储能设备等电源模块功率、信号传输。
- Power and signal transmission of power modules such as communication equipment and energy storage equipment.

产品描述 Description:

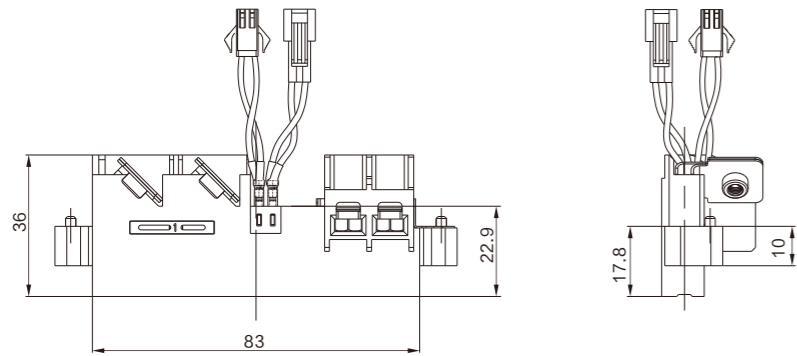
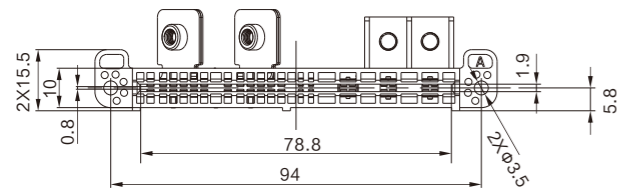
- 端接方式 Termination Methods: PCB (插接plug) & 导线连接 Wire connection
- 安装方式 Installation Methods: 螺钉锁紧 Screw locking

性能参数 Specification

- 额定电流 Current Rating: 100A/30A/3A
- 额定电压 Voltage Rating: 420V/72V
- 绝缘电阻 Insulation Resistance: $\geq 500M\Omega$
- 耐电压 Dielectric Withstanding Voltage: 2000V/500V AC
- 工作温度 Temperature Range: $-40^{\circ}\text{C} \sim +125^{\circ}\text{C}$
- 机械寿命 Mechanical Life: 50次



141064E-JL-S(2+3+4)R插座



141086电连接器

141086 CONNECTOR INTRODUCTION

应用范围 Application

- 通信设备、储能设备等电源模块功率、信号传输。
- Power and signal transmission of power modules such as communication equipment and energy storage equipment.

产品描述 Description

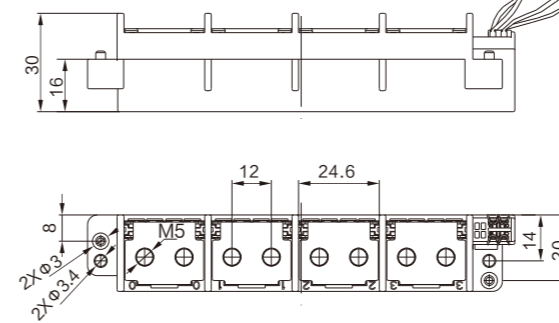
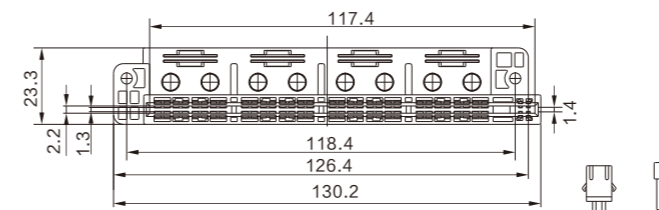
- 端接方式 Termination Methods: PCB (插接plug) & 导线连接 Wire connection
- 安装方式 Installation Methods: 螺钉锁紧 Screw locking

性能参数 Specification

- 芯数 Pins: 68max
- 额定电流 Current Rating: 125A/2A
- 额定电压 Voltage Rating: 85V/48V
- 绝缘电阻 Insulation Resistance: $\geq 500M\Omega/300M\Omega$
- 耐电压 Dielectric Withstanding Voltage: 3000V/500V DC
- 工作温度 Temperature Range: $-40^{\circ}\text{C} \sim +125^{\circ}\text{C}$
- 机械寿命 Mechanical Life: 50次



141086-JL-S(4+4)R插座



YGC196-438A电连接器

YGC196-438A CONNECTOR INTRODUCTION

应用范围 Application

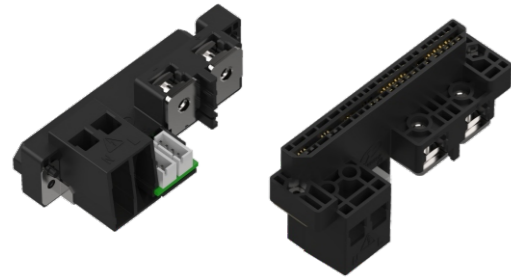
- 通信设备、储能设备等电源模块功率、信号传输。
- Power and signal transmission of power modules such as communication equipment and energy storage equipment.

产品描述 Description

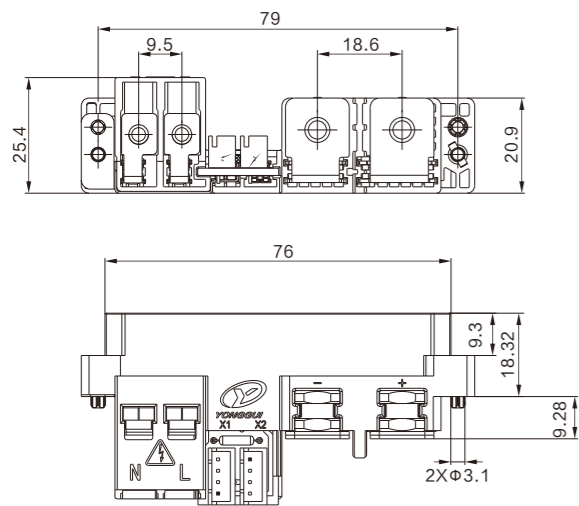
- 端接方式 Termination Methods: PCB (插接plug) & 导线连接 Wire connection
- 安装方式 Installation Methods: 螺钉锁紧 Screw locking

性能参数 Specification

- 额定电流 Current Rating: 35A/85A/2A
- 额定电压 Voltage Rating: 400V/80V
- 绝缘电阻 Insulation Resistance: $\geq 500M\Omega$
- 耐电压 Dielectric Withstanding Voltage: 4500V DC/5000V AC/3000V DC
- 工作温度 Temperature Range: $-40^{\circ}C \sim +125^{\circ}C$
- 机械寿命 Mechanical Life: 50次



整流器连接端子A



YGC196-370-4PIN电连接器

YGC196-370-4PIN CONNECTOR INTRODUCTION

应用范围 Application

- 通信设备、充电设备以及储能设备等电源模块的功率、信号传输。
- Power transmission of power modules such as communication equipment, charging equipment and energy storage equipment.

产品描述 Description

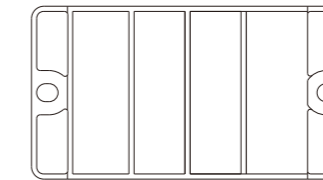
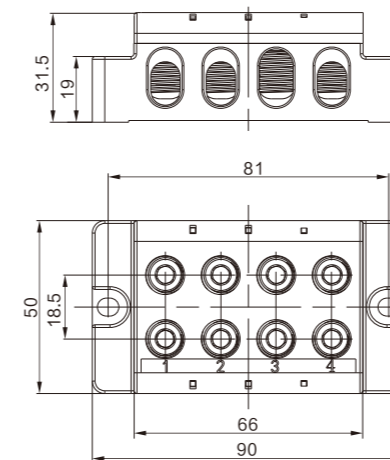
- 接线规格 Cable specification: 1/0 ~ 14 AWG

性能参数 Specification

- 芯数 Pins: 4
- 额定电流 Current Rating: 150A
- 额定电压 Voltage Rating: 600V
- 绝缘电阻 Insulation Resistance: $\geq 1000M\Omega$
- 耐电压 Dielectric Withstanding Voltage: 2500V AC
- 工作温度 Temperature Range: $-20^{\circ}C \sim +60^{\circ}C$ (不可结冰或结露 no freeze or dew)
- 防护等级 IP Code: IP20
- 机械寿命 Mechanical Life: 50次



YG196-370-4PIN



141056电连接器

141056 CONNECTOR INTRODUCTION

应用范围 Application

- 电源类控制箱、电源输出设备以及基站等的电气连接。
- Electrical connection of source control cabinet、power output device and base station.

产品描述 Description

- 安装方式 Installation Methods: 螺钉锁紧 Screw locking
- 美式双联插座 American dual socket

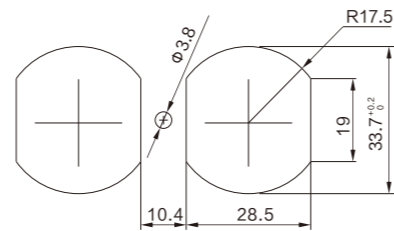
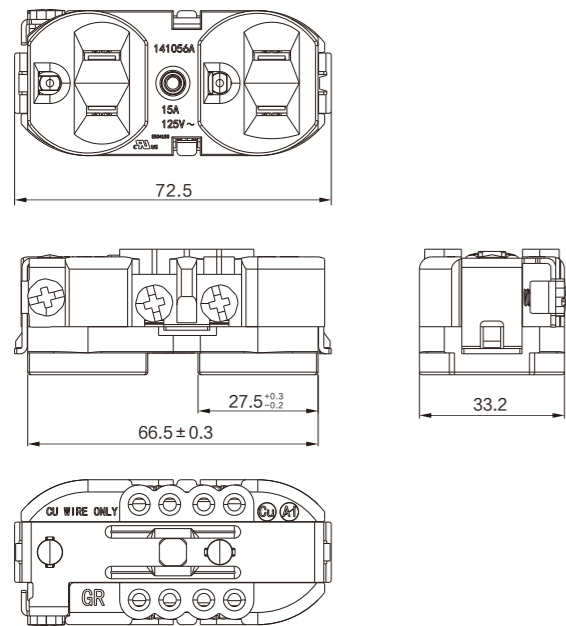
性能参数 Specification

- 芯数 Pins: 2*3芯
- 额定电流 Current Rating: 15A/20A
- 额定电压 Voltage Rating: 125V
- 绝缘电阻 Insulation Resistance: $\geq 100M\Omega$
- 耐电压 Dielectric Withstanding Voltage: 500V AC
- 工作温度 Temperature Range: $-20^{\circ}C \sim +65^{\circ}C$
- 机械寿命 Mechanical Life: ≥ 5000 次



141056A-E15-2S3R-1插座

141056A-E15-2S3R-1插座开孔尺寸



141063电连接器

141063 CONNECTOR INTRODUCTION

应用范围 Application

- 电源类控制箱、网络电源输出设备以及其他同类场合的电气连接。
- Electrical connection of source control cabinet、Internet power output device and other similar situations.

产品描述 Description

- 接线方式 Termination Methods: 外侧 Push-in 连接技术, 内侧螺钉连接技术
Outside Push-in connection, inside screw connection.

- 锁紧方式 Lock mode: 卡扣锁紧 Buckle locking
- 线缆规格 Cable specification: $4mm^2 \sim 16mm^2$

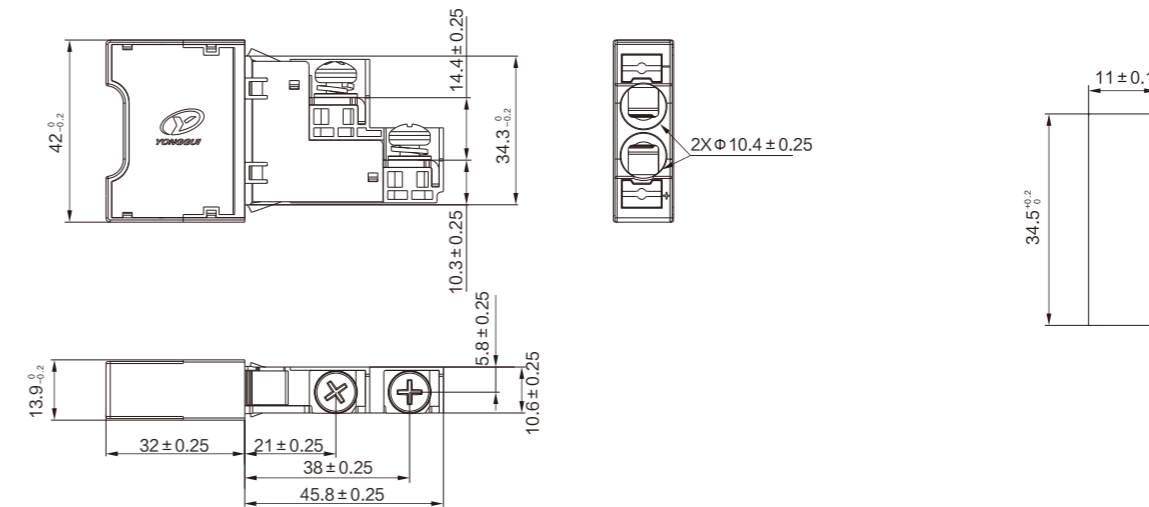
性能参数 Specification

- 芯数 Pins: 2
- 额定电流 Current Rating: 63A
- 额定电压 Voltage Rating: 450V DC
- 绝缘电阻 Insulation Resistance: $\geq 1000M\Omega$
- 耐电压 Dielectric Withstanding Voltage: 1890V AC
- 工作温度 Temperature Range: $-40^{\circ}C \sim +120^{\circ}C$
- 防护等级 IP Code: IP20
- 机械寿命 Mechanical Life: 50次



141063-JL-S2R插座

141063-JL-S2R插座开孔尺寸



141084电连接器

141084 CONNECTOR INTRODUCTION

应用范围 Application

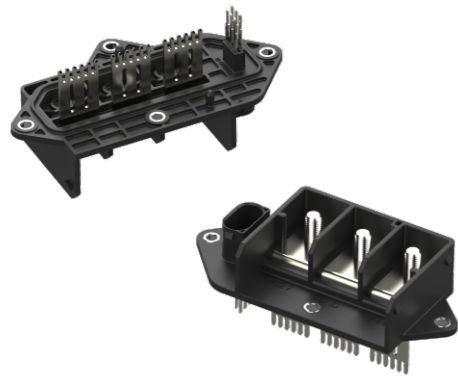
- 车载DC/DC 系统功率及信号传输。
- Power and signal transmission of automotive DC/DC system.

产品描述 Description

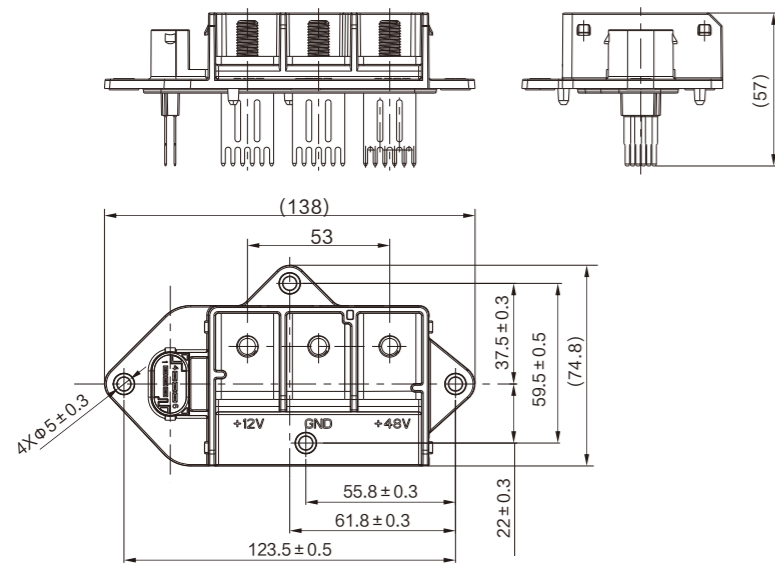
- 端接方式 Termination Methods: 弯式焊板连接, 螺钉连接 Bent plate connection, screw connection
- 锁紧方式 Lock mode: 螺钉锁紧 Screw locking
- 线缆规格 Cable specification: 16mm² ~ 25mm²

性能参数 Specification

- 芯数 Pins: 3+6
- 额定电流 Current Rating: 87A/2A
- 额定电压 Voltage Rating: 48V/12V DC
- 绝缘电阻 Insulation Resistance: $\geq 100M\Omega$
- 耐电压 Dielectric Withstanding Voltage: 1000V AC
- 工作温度 Temperature Range: -40°C ~ +125°C
- 机械寿命 Mechanical Life: 50 次



141084-JL-P(3+6)R插座



141093电连接器

141093 CONNECTOR INTRODUCTION

应用范围 Application

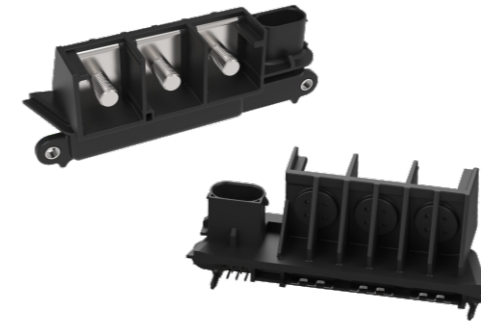
- 车载2.5KW DC/DC系统功率及信号传输。
- Power and signal transmission of automotive 2.5KW DC/DC system.

产品描述 Description

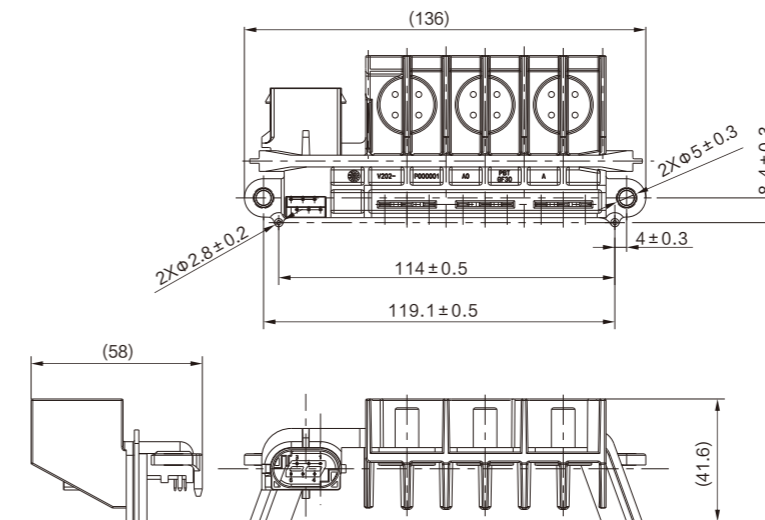
- 端接方式 Termination Methods: 弯式焊板连接, 螺钉连接 Bent plate connection, screw connection
- 锁紧方式 Lock mode: 螺钉锁紧 Screw locking
- 线缆规格 Cable specification: 35mm² ~ 50mm²

性能参数 Specification

- 芯数 Pins: 3+6
- 额定电流 Current Rating: 180A/2A
- 额定电压 Voltage Rating: 48V/12V DC
- 绝缘电阻 Insulation Resistance: $\geq 100M\Omega$
- 耐电压 Dielectric Withstanding Voltage: 1000V AC
- 工作温度 Temperature Range: -40°C ~ +125°C
- 机械寿命 Mechanical Life: 50 次



141093-JL-P(3+6)R插座



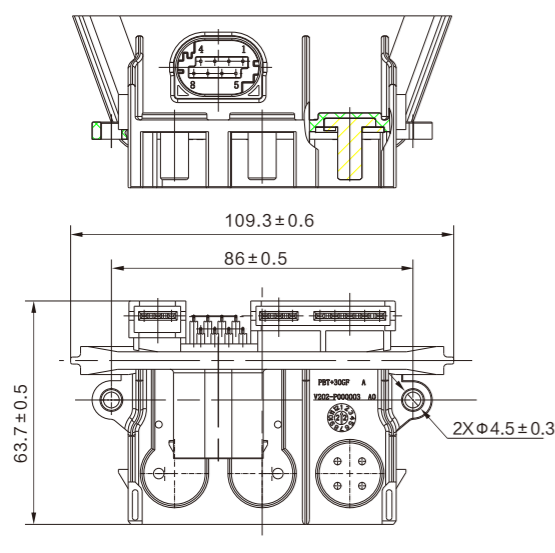
141106电连接器

141106 CONNECTOR INTRODUCTION



应用范围 Application
<ul style="list-style-type: none"> ● 车载3KW DC/DC系统功率及信号传输。 ● Power and signal transmission of automotive 3KW DC/DC system.
产品描述 Description
<ul style="list-style-type: none"> ● 端接方式 Termination Methods: 弯式焊板连接, 螺钉连接 Bent plate connection, screw connection ● 锁紧方式 Lock mode: 螺钉锁紧 Screw locking ● 线缆规格 Cable specification: 50mm² ~ 70mm²
性能参数 Specification
<ul style="list-style-type: none"> ● 芯数 Pins: 1+2+8 ● 额定电流 Current Rating: 210A/90A/2A ● 额定电压 Voltage Rating: 48V/12V DC ● 绝缘电阻 Insulation Resistance: ≥ 100MΩ ● 耐电压 Dielectric Withstanding Voltage: 1000V AC ● 工作温度 Temperature Range: -40℃ ~ +125℃ ● 机械寿命 Mechanical Life: 50次

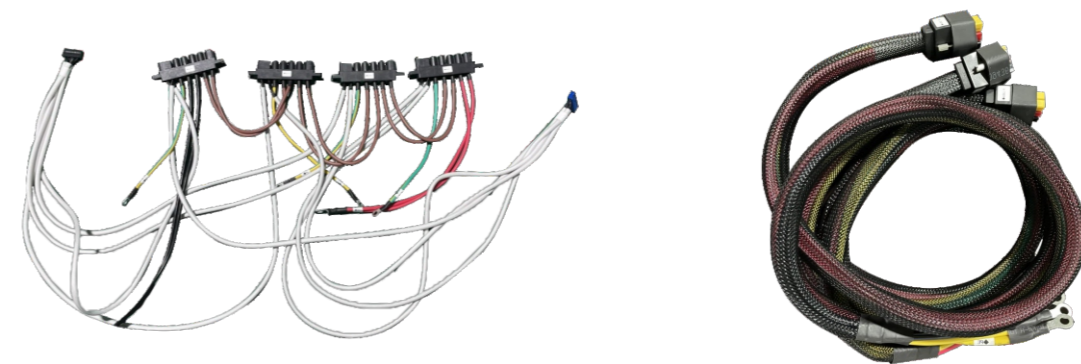
141106-JL-P(3+8)R插座



通信及锂电池机柜线束

COMMUNICATION AND LITHIUM BATTERY CABINET HARNESS

应用场景 Application
<ul style="list-style-type: none"> ● 通信机柜Communication cabinet 锂电池 机柜Lithium battery cabinet
产品描述 Description
<ul style="list-style-type: none"> ● 连接 Connect: 通信机柜电源供电Power supply of communication cabinet ● 线径 Cable diameterter: 12/10/8/6/4AWG (可定制) ● 长度 Length: 500 ~ 3500mm (可定制 Customizable)



UPS不间断电源线束

UPS UNINTERRUPTIBLE POWER SUPPLY HARNESS

应用场景 Application
<ul style="list-style-type: none"> ● UPS机柜 UPS cabinet
产品描述 Description
<ul style="list-style-type: none"> ● 连接 Connect: UPS不间断电源或信号 UPS uninterruptible power supply or signal ● 线径 Cable diameterter : 0.3-50mm² (可定制Customizable) ● 长度 Length: 70 ~ 4500mm (可定制 Customizable)



线束系列

基站交直流电源线束

WIRING HARNESS FOR THE WHOLE MACHINE SAMPLING

应用场景 Application

- 基站机柜 Energy storage racks

产品描述 Description

- 连接 Connect: 电源及信号线 Power and signal cables for battery pack
- 线径 Cable diameter: 0.75-1.5mm²
- 长度 Length: 3~150M (可定制 Customizable)



线束系列

光纤室外拉远线束

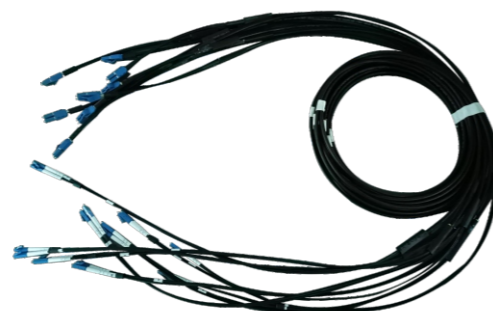
OPTICAL FIBER OUTDOOR REMOTE HARNESS

应用场景 Application

- 光纤基站 Optical fiber signal base station

产品描述 Description

- 连接 Connect: 光传输信号线 Optical transmission signal line
(可选配FC、LC、SC、Uniboot或交叉配对)
- 线规 Wire gauge: OM2、OM3、G652D, SM、MM
- 长度 Length: 3~300M (可定制 Customizable)



产品
客户
展示

永 贵 连 接
Connectors of Yonggui

连 接 专 家
Connecting to specialists

H3C

FOXCONN
富士康

吉利汽车
GEELY AUTO

BYD
比亚迪汽车

许继集团

国家电网公司
STATE GRID CORPORATION OF CHINA

ZTE中兴

VERTIV
维谛技术

ZHONHEN中恒

大唐电信

NOKIA

中国工程物理研究院
CHINA ACADEMY OF ENGINEERING PHYSICS

中核集团
CNNC

台达
DELTA

MEGMEET

CSG科大智能